



Middlesex County Municipalities Child & Family Community Profile

SEPTEMBER 2012

Profile Summary

INSIDE THIS REPORT:

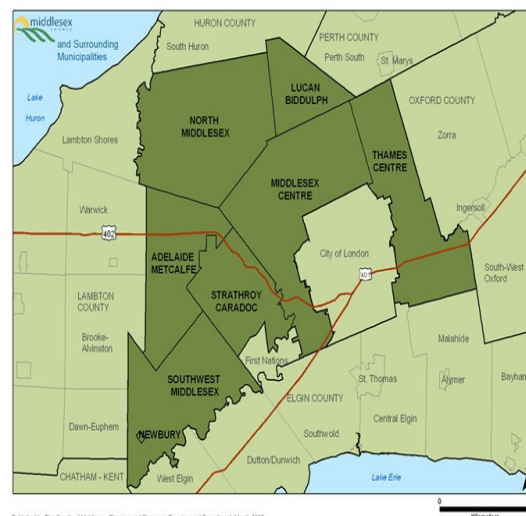
Census Data, 2011 & 2006	2-4
2006 Social Risk Index	5
What is the EDI?	6
EDI Results, 2009 & 2006	7-10
Notes about the Data	11

This profile provides 2011 and 2006 census data, Social Risk Index (SRI), and measurements of children's developmental health at school entry (2009 and 2006 Early Development Instrument (EDI)) for the following municipalities of Middlesex County: Adelaide Metcalfe, Lucan Biddulph, Middlesex Centre, Village of Newbury, Southwest Middlesex, North Middlesex, Strathroy-Caradoc, and Thames Centre. The Child and Family Community Profile is meant to provide organizations serving the municipalities in Middlesex County with information to support planning-related activities. Reading this profile will help provide you with a picture of our communities and the well being and development of our children. For more information or further questions, contact information for the Data Analysis Coordinators supporting Middlesex County can be found on page 11.

Population sizes vary across municipalities in Middlesex County. Strathroy-Caradoc, Middlesex Centre, and Thames Centre had the largest population counts in 2011 and 2006, whereas Village of Newbury had the smallest population count in 2011 and 2006. Municipalities included in this report demonstrate similar proportions of the population between the ages of 0 to 6 and 7 to 12. Please refer to pages 2 to 4 and 11 for more information on the census data, as well as comparison data for Middlesex County and the Province of Ontario.

On the whole, the municipalities in Middlesex County report low levels of characteristics associated with risk and disadvantage (social risk), in comparison to the national average. Out of a maximum total score of 9, social risk scores ranged from 0 to 3. The highest social risk score reported was for Village of Newbury (3) and the lowest scores reported were for Middlesex Centre (0) and Thames Centre (0). Refer to page 5 and 11 for more information on the SRI.

In general, the vast majority of children residing in the municipalities of Middlesex County are developmentally healthy at school entry. The EDI average scores from 2009 and 2006 were comparable to provincial averages in all developmental domains. In 2009, the proportion of vulnerable children in every municipality were lower than the provincial portion of children vulnerable on one or more domains (27.3%). In 2006, the combined EDI geographic reporting area of Southwest Middlesex and Village of Newbury had a greater percentage of children vulnerable on one or more domains (in comparison to the province). Refer to pages 6 to 11 for more information on the EDI.



Published by The County of Middlesex, Planning and Economic Development Department, March 2007
This map is for illustrative purposes only. Do not rely on it as being an precise indicator for routes, locations of features, nor as a guide to navigation.

Census Population Estimates, 2011 & 2006

	Adelaide Metcalfe	Lucan Biddulph	Middlesex Centre	Village of Newbury	Southwest Middlesex	North Middlesex	Strathroy - Caradoc	Thames Centre	Middlesex County [^]	Province of Ontario
Census Population Estimates (Statistics Canada, 2011)										
Population in 2011 ^{1a}	3,028	4,338	16,487	447	5,860	6,658	20,978	13,000	73,000	12,851,821 [†]
Total population by age groups ^{1b}	3,025	4,335	16,485	450	5,860	6,660	20,980	13,000	72,995	12,851,820
Population age 0-6 years	260	445	1,375	45	405	560	1,600	945	5,835	988,230
% of the population age 0-6 by total population by age groups	9	10	8	10	7	8	8	7	8	8
Population age 7-12 years	260	305	1,300	30	385	485	1,545	960	5,505	875,930
% of the population age 7-12 by total population by age groups	9	7	8	7	7	7	7	7	8	7
Population age 0—12 years	520	750	2,675	75	790	1,045	3,145	1,905	11,340	1,864,160
% of the population age 0—12 by total population by age groups	17	17	16	17	13	16	15	15	16	15
Census Population Estimates (Statistics Canada, 2006)										
Population in 2006 ^{1a}	3,135 ^A	4,187	15,589	439	5,890	6,740	19,959 ^A	13,085	69,938 [†]	12,160,282 [†]
Total population by age groups ^{2a}	3,115	4,185	15,590	440	5,890	6,740	19,980	13,085	69,940	12,160,280
Population age 0-6years	265	355	1,245	40	420	550	1,640	985	5,595	950,570
% of the population age 0-6 by total population by age groups	9	8	8	9	7	8	8	8	8	8
Population age 7-12 years	255	355	1,425	35	460	605	1,690	1,160	6,090	925,990
% of the population age 7-12 by total population by age groups	8	8	9	8	8	9	8	9	9	8
Population age 0—12 years	520	710	2,670	75	880	1,155	3,330	2,145	11,685	1,876,560
% of the population age 0—12 by total population by age groups	17	17	17	17	15	17	17	16	17	15

Notes and Sources:

[^] Middlesex County, excluding City of London.

^A For more information on 2006 adjusted counts, refer to 2011 Census Profiles for more information on definition and symbols.

[†] For more information on exclusions, refer to Statistics Canada, 2011 Census of Population, Census Profile, Definitions, sources and symbols.

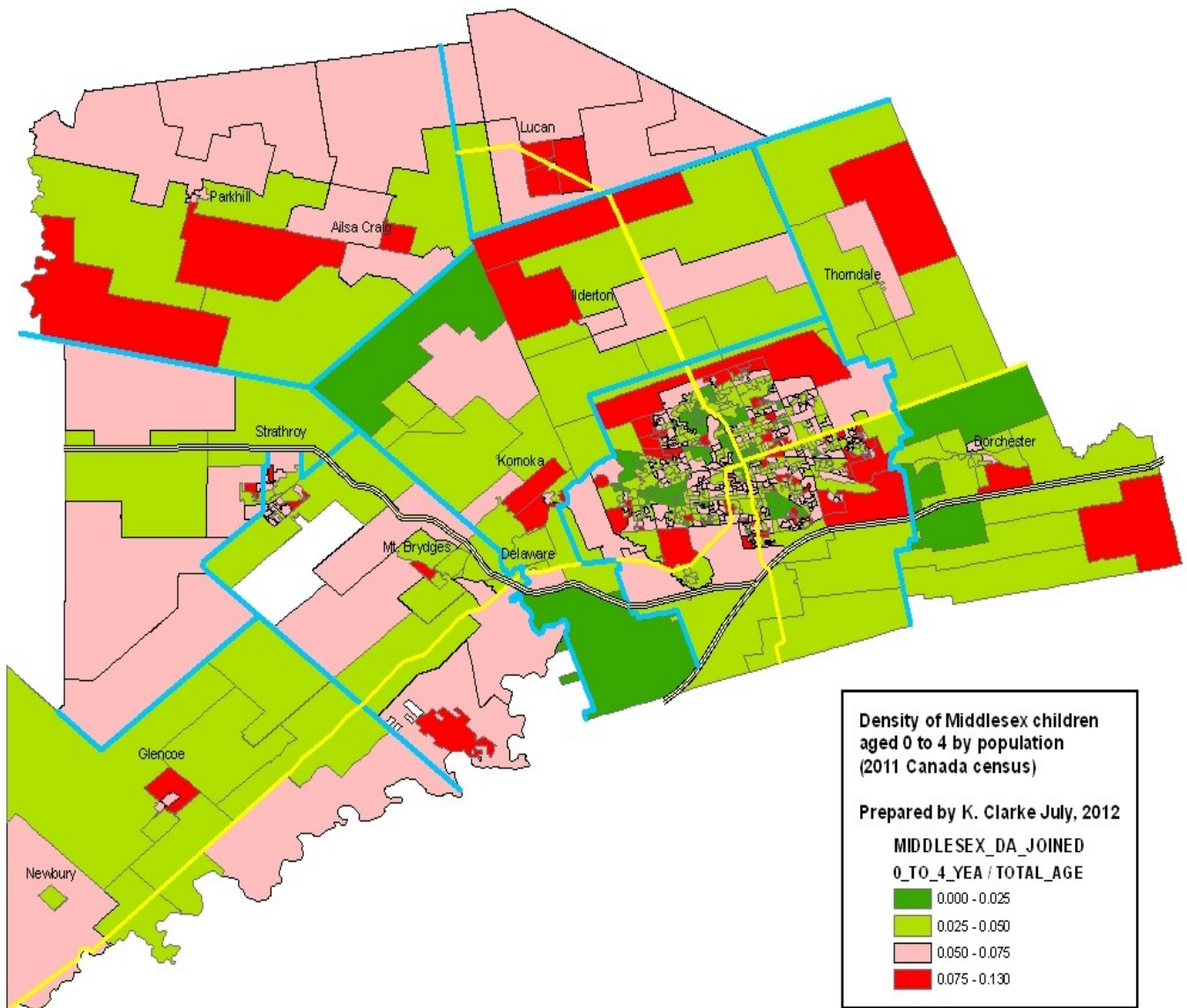
-Refer to page 11 regarding information on Statistics Canada's random rounding definition and practices.

^{1a} Source: Statistics Canada, 2011 Census of Population.

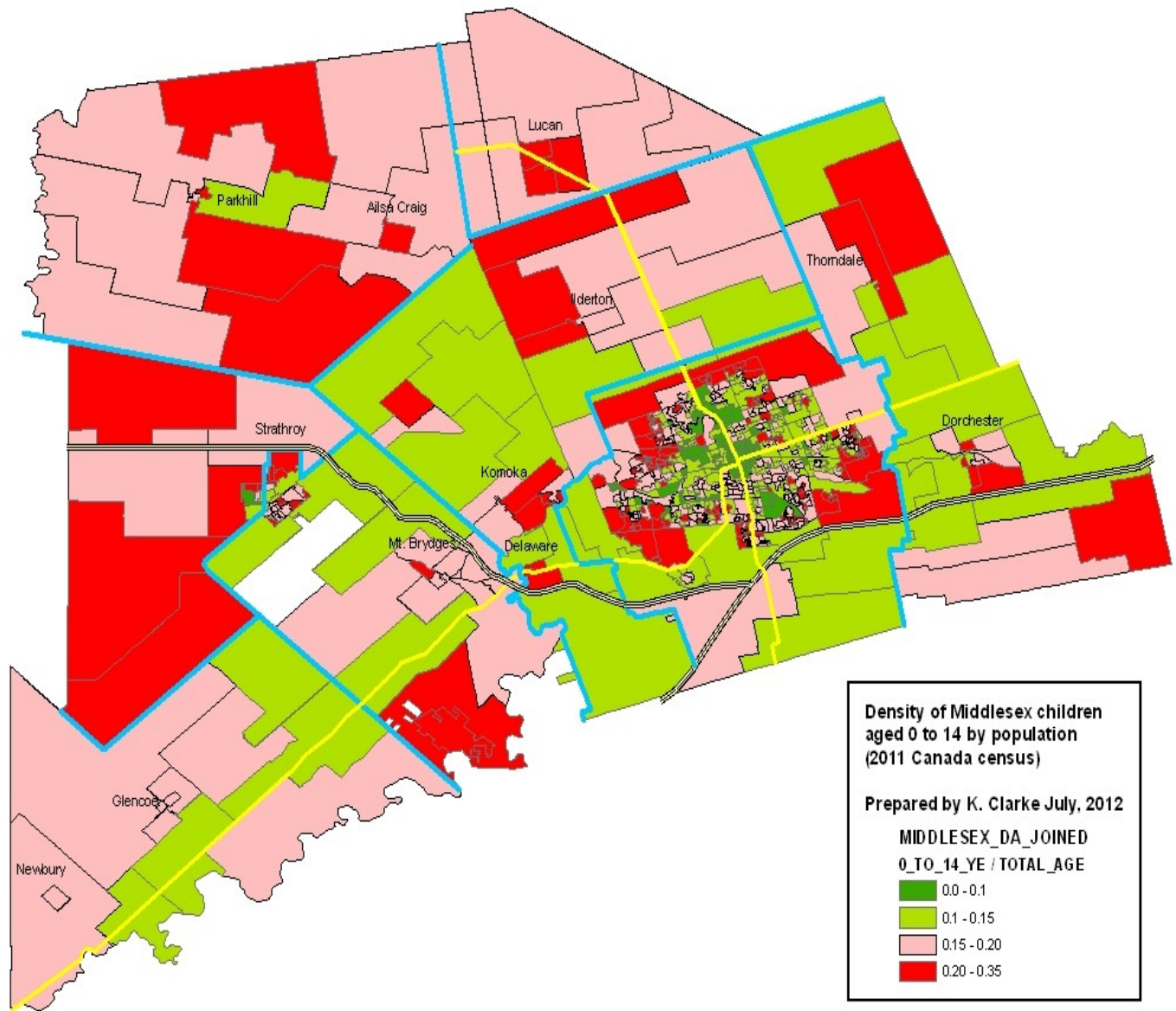
^{1b} Source: Statistics Canada, 2011 Census of Population, Statistics Canada catalogue no. 98-311-XCB2011023.

^{2a} Source: Statistics Canada, 2006 Census of Population, Statistics Canada catalogue no. 97-551-XCB2006011.

Census Population Estimates, 2011 & 2006



Census Population Estimates, 2011 & 2006



Social Risk Index (SRI), 2006

	Adelaide Metcalfe	Lucan Biddulph	Middlesex Centre	Village of Newbury	Southwest Middlesex	North Middlesex	Strathroy - Caradoc	Thames Centre	Middlesex County [^]
Social Risk Index³ (Statistics Canada, 2006)									
Knowledge of Official Languages- % knowledge of neither English nor French	0.0	0.4	0.2	2.3	0.5	0.0	1.1	0.5	0.6
Lone parent families- % of families with a lone parent	4.2	11.4	7.4	12.5	11.7	9.1	12.6	8.1	10.2
Educational Attainment- % without a certificate, diploma or degree, age 15 and over	26.7	25.3	17.9	47.0	28.8	27.9	29.7	23.2	25.5
Unemployment- Unemployment rate, age 15 and over and in the labour force	3.9	4.6	3.2	0.0	3.7	3.1	5.4	3.0	4.0
Low Income- % Low income after tax- all persons	2.4	4.1	2.2	6.9	3.8	2.2	3.8	3.0	3.2
Mobility- % age 1 year and over, did not live at same address 1 year ago	6.3	10.9	9.8	5.9	10.4	8.1	10.8	8.1	9.5
Government Transfers- % Income from government transfers	8.6	9.3	7.0	21.6	13.6	11.6	12.2	7.6	10.7
Homeownership- % rented dwellings	15.7	16.7	11.6	20.0	17.8	14.3	19.5	10.0	15.1
Recent Immigration- % recent immigrants, 2001-2006	0.0	0.2	0.6	0.0	0.0	0.2	0.6	0.5	0.4
SOCIAL RISK INDEX: scale is 0-9, 9 being greatest risk. For methodology go to page 11.	1	1	0	3	2	2	2	0	1

Notes and Sources:

[^] Middlesex County, excluding City of London.

- For more information on the Social Risk Index, refer to page 11.

³ Source: Statistics Canada, 2006 Census of Population.

What is the Early Development Instrument (EDI) ?



Developed by Offord Centre for Child Studies at McMaster University, the EDI is a population based tool used to assess children's developmental health at school entry. It is a checklist consisting of over 120 questions about children's behaviour and developmental characteristics within the classroom. The EDI questionnaire is completed by Senior Kindergarten teachers after several months of classroom interaction and observation. The questionnaires are processed by the Offord Centre for Child Studies to provide community scores for different domains and sub-domains of development. EDI results are analyzed at a group-level, providing a snapshot of children's development at various points in time. This information can then be used by families and children's organizations to ensure children are prepared for school entry.

EDI Domains and Sub-domains of Development

1. Communication Skills & General Knowledge

Ability to communicate needs and ideas effectively, interest in the surrounding world.

2. Language & Cognitive Development

Interest and memory: Interest in participating in literacy and numeracy-oriented activities.

Complex literacy skills: Reading and writing.

Basic literacy and numeracy: Number recognition and counting, comfort with basic mathematical concepts.

Basic literacy: basic abilities to recognize written words and to participate in literacy-oriented play.

3. Emotional Health & Maturity

Prosocial and helping behaviour: Basic empathy and willingness to help others who may need assistance or encouragement.

Hyperactive and inattentive behaviours: Restlessness and distractibility, inability to concentrate.

Anxious and fearful behaviour: Anxiety, excessive crying, sadness and fearfulness, lack of comfort with school.

Aggressive behaviour: Physical and non-physical aggression and disobedience.

4. Social Knowledge & Competence

Respect and responsibility: Respect for others and for property, shown by: self-control, following rules, taking care of materials, and accepting responsibility for actions.

Readiness to explore new things: Curiosity and eagerness to explore new toys, books and games.

Overall social competence with peers: Overall social skills, self-confidence, ability to get along with various children.

Independence and adjustment: Working habits and problem-solving abilities, ability to adjust to class routines.

5. Physical Health & Well Being

Gross and fine motor skills: Ability to perform skills requiring gross and fine motor competence, and ability to sustain energy levels during the day.

Physical independence: Physically prepared for active participation in school activities—being dressed appropriately, coming to school on time, not hungry or tired.

Physical readiness for school work: Self-hygiene, independence, handedness, coordination and lack of signs of dependence like finger-sucking.

Vulnerable: The percentage of children scoring low (below the lowest 10th percentile) on any of the 5 domains of development.

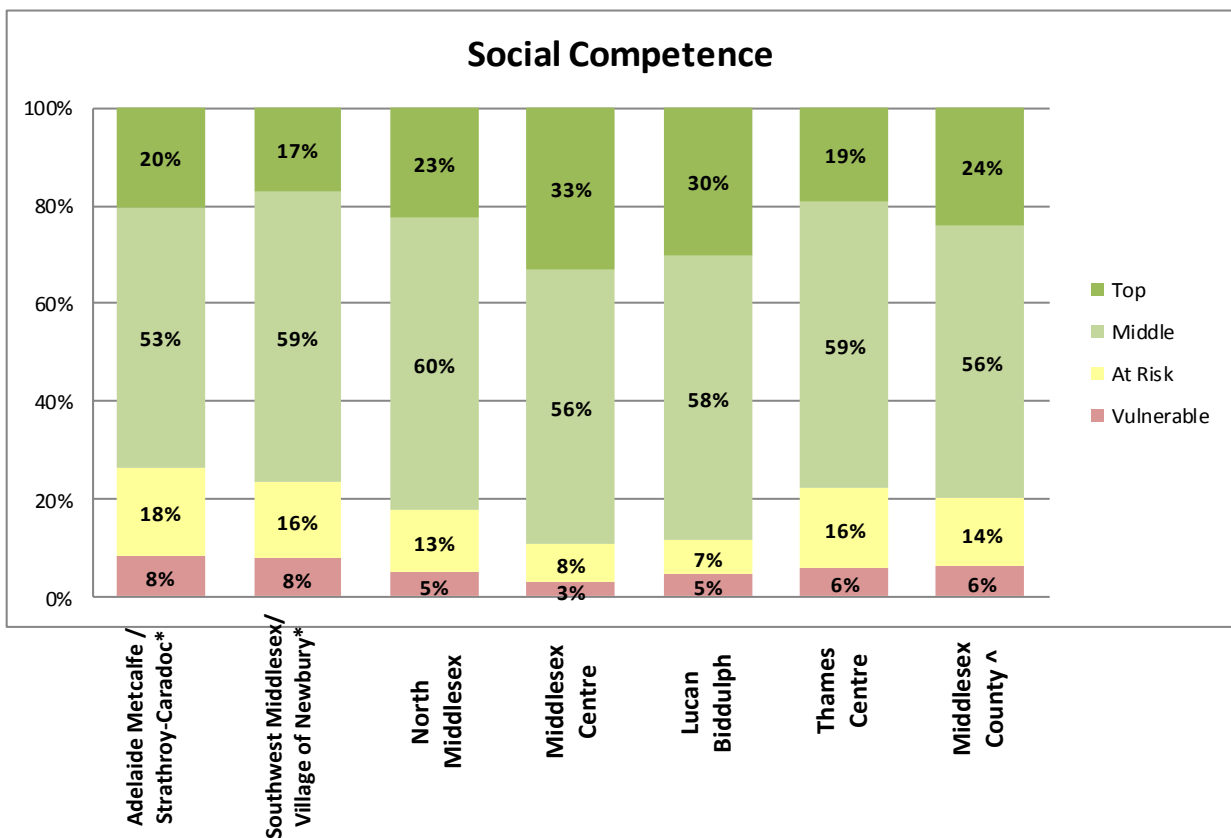
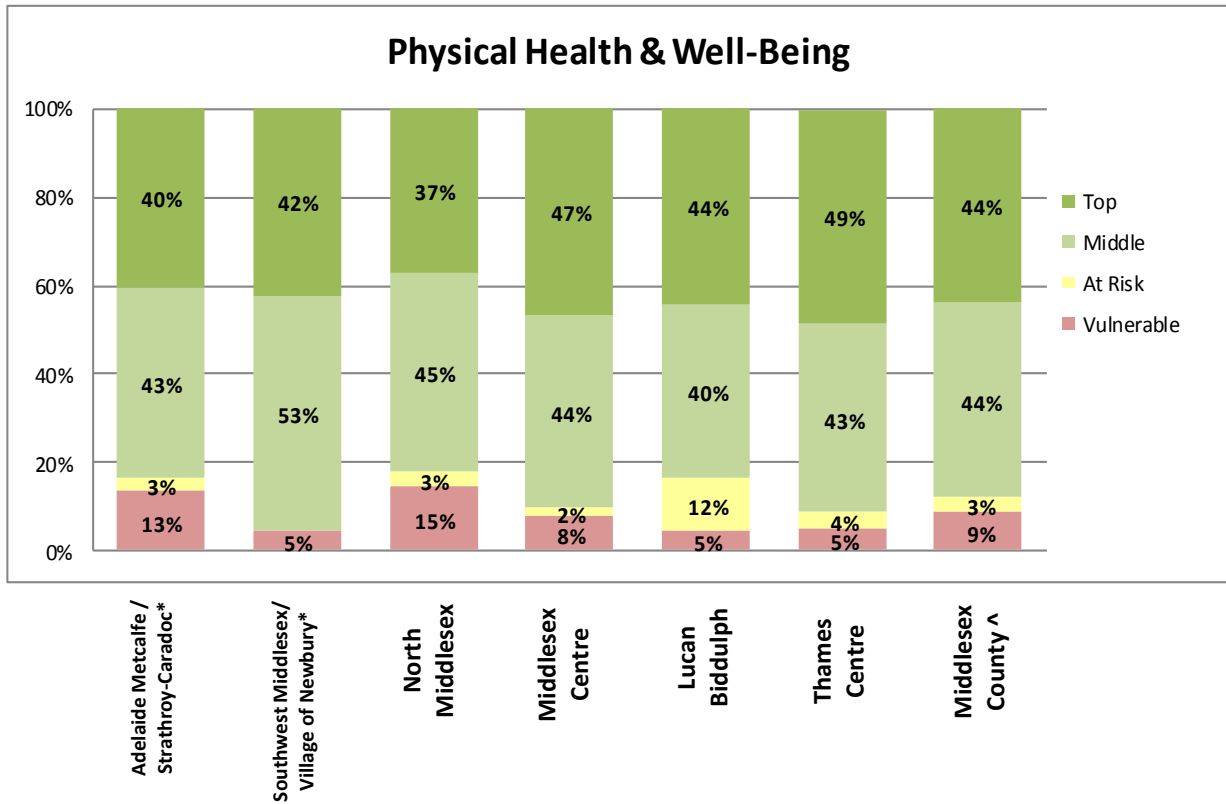
The EDI results in this report establish a baseline of children's developmental health as they begin school in the county of Middlesex. This report is meant to provide planning groups with evidence-based data that will help inform policy and service plans. The EDI data should not be used exclusively for planning purposes but should be used in combination with other data sources related to child development. Other data sources may include socio-economic, health and program/service information at the neighbourhood level. This will help policy and planning bodies identify the strengths and weaknesses within and across neighbourhoods so that the necessary supports are in place to ensure better outcomes for all children.

For a comparison of children's developmental health at school entry across Middlesex County please see page 7.

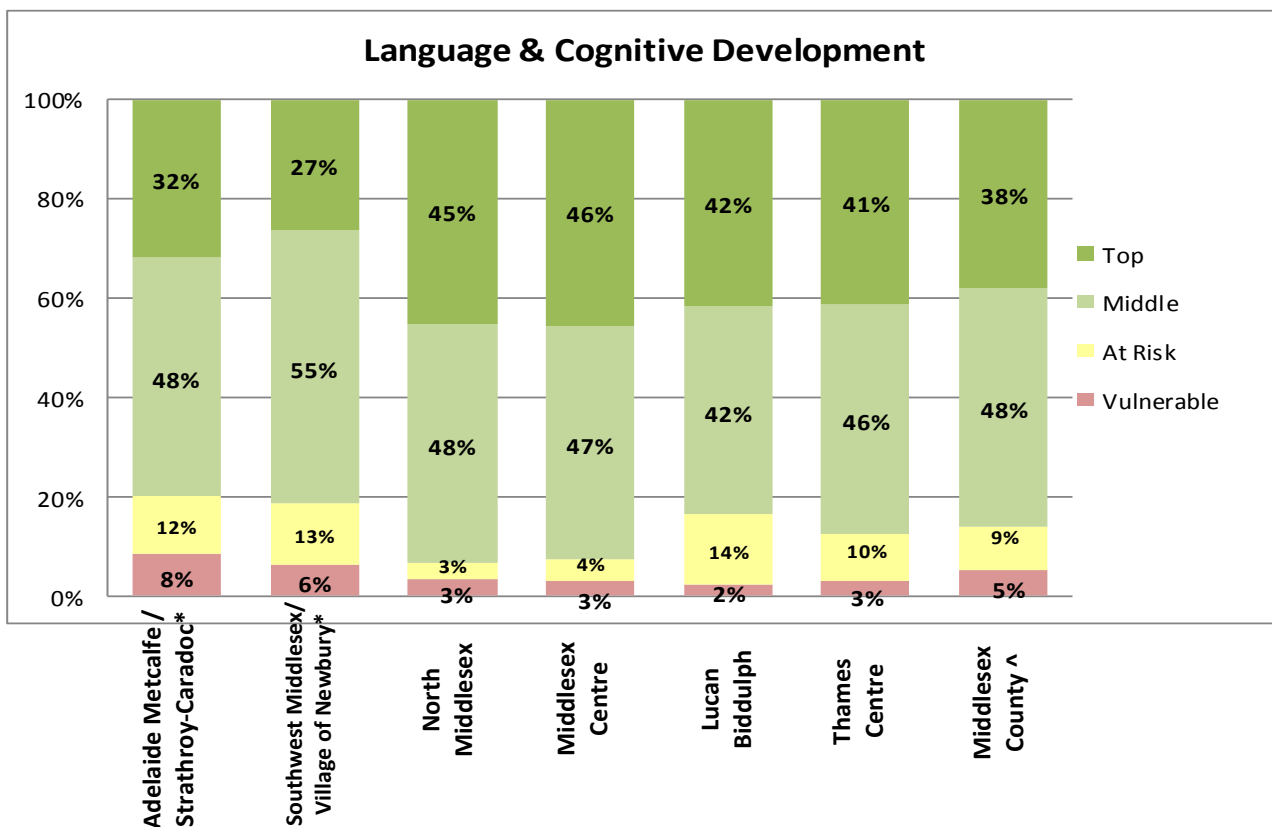
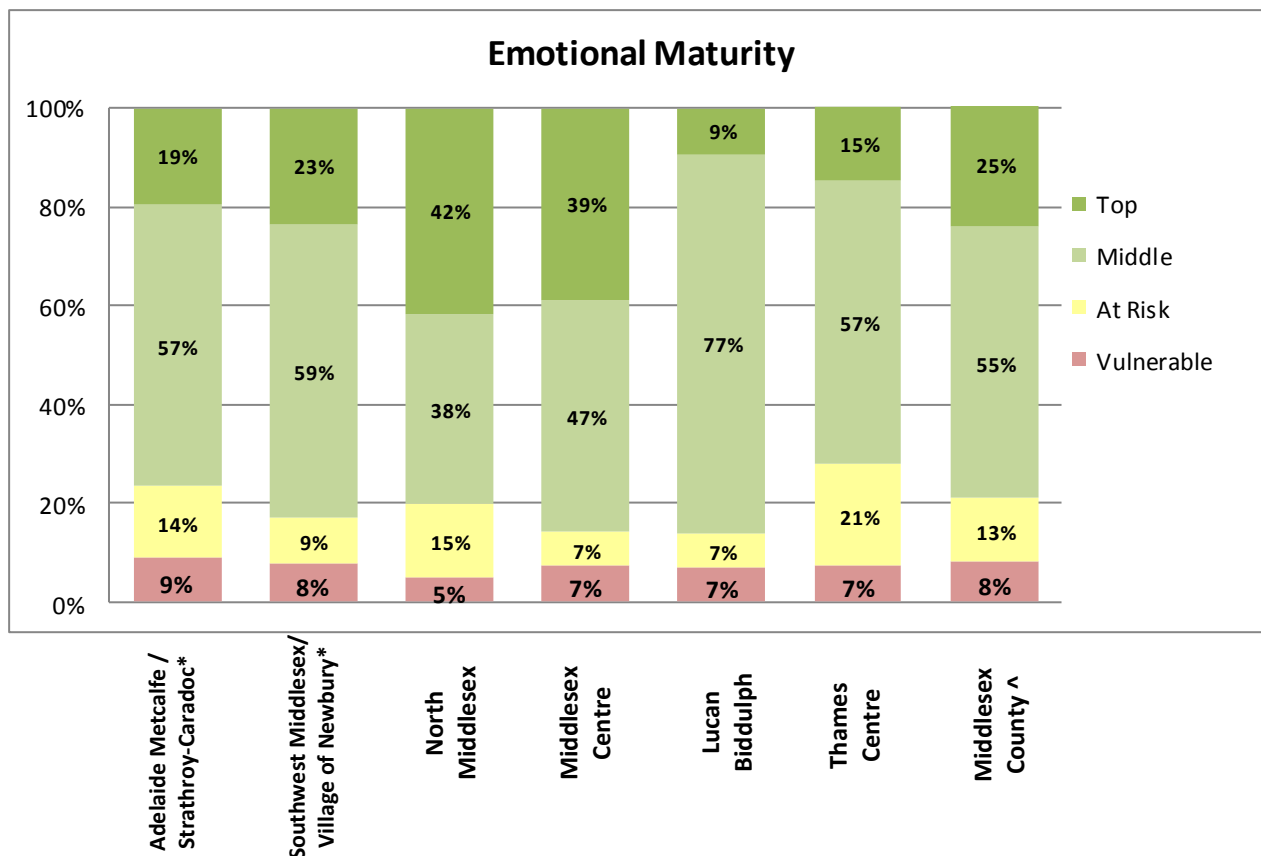
Early Development Instrument (EDI), 2009 & 2006

	Adelaide Metcalfe / Strathroy-Caradoc*	Southwest Middlesex/ Village of Newbury*	North Middlesex	Middlesex Centre	Lucan Biddulph	Thames Centre	Middlesex County ^	Province of Ontario ⁶
EDI Results, 2009⁴								
Valid Questionnaires	238	64	62	167	43	136	710	113,710
Domains of Development (scale 0-10, 10 being best possible score)								
Physical Health and Well-Being	8.9	9.3	8.7	9.3	9.1	9.3		8.91
Social Competence	8.4	8.4	9.0	9.1	9.0	8.6		8.34
Emotional Maturity	8.0	8.2	8.6	8.6	8.2	7.9		8.09
Language and Cognitive Development	8.7	8.7	9.4	9.4	9.1	9.2		8.57
Communication Skills and General Knowledge	7.6	8.1	7.8	9.0	7.5	8.4		7.80
% vulnerable on at least <i>one</i> EDI domain	24	22	21	13	16	16	19	27.3
EDI Results, 2006⁵								
Valid Questionnaires	204	71	51	172	50	124	672	113,710
Domains of Development (scale 0-10, 10 being best possible score)								
Physical Health and Well-Being	8.9	9.0	8.8	9.3	9.1	9.1		8.91
Social Competence	8.4	8.2	8.7	8.8	9.1	8.8		8.34
Emotional Maturity	8.1	8.3	8.6	8.4	8.7	8.0		8.09
Language and Cognitive Development	8.6	8.3	8.9	9.1	8.5	9.2		8.57
Communication Skills and General Knowledge	7.5	7.5	8.0	8.9	8.0	8.3		7.80
% vulnerable on at least <i>one</i> EDI domain	23	31	20	11	16	21	19	27.3

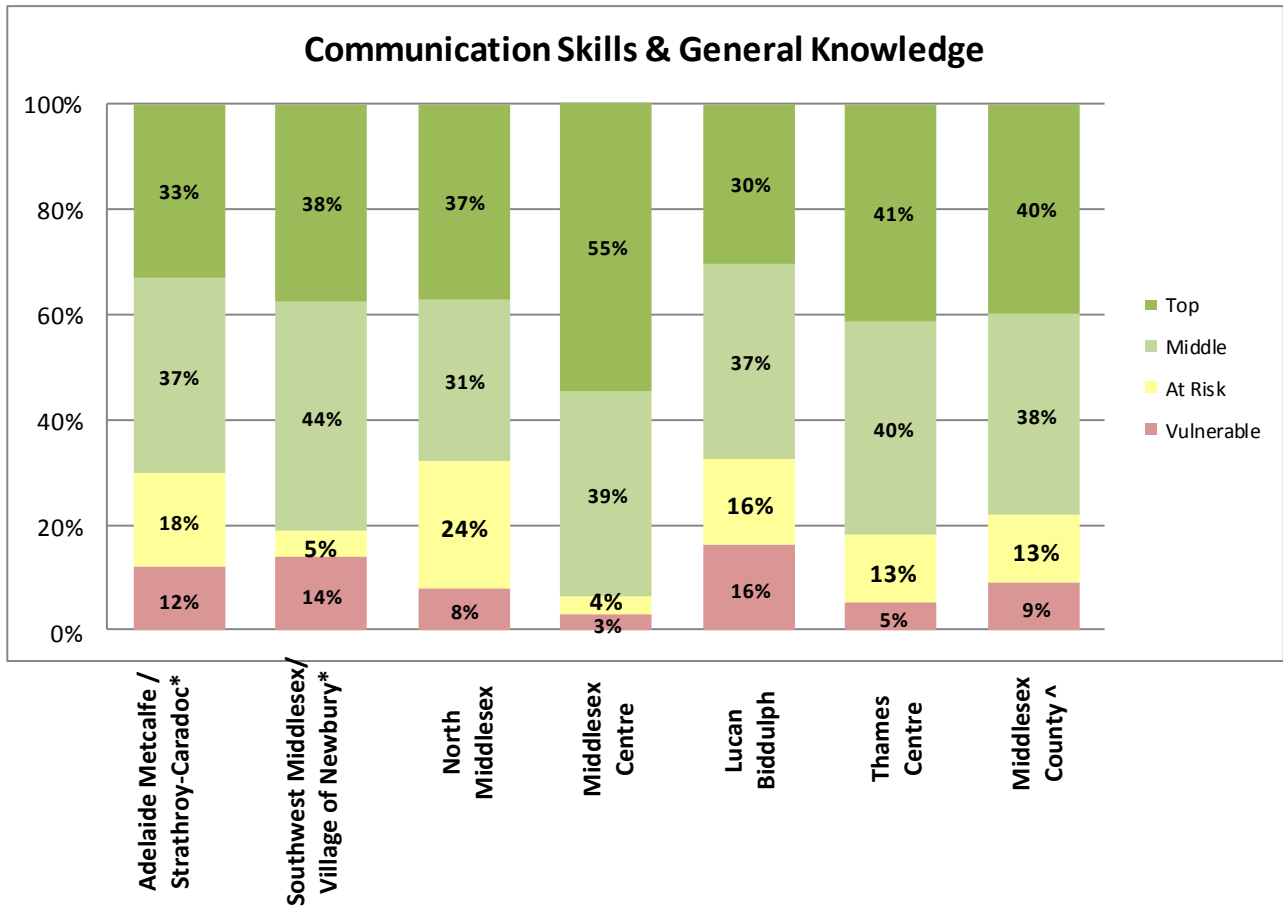
Distribution of Scores, Early Development Instrument (EDI), 2009



Distribution of Scores, Early Development Instrument (EDI), 2009



Distribution of Scores, Early Development Instrument (EDI), 2009



Notes and Data Sources:

^ Middlesex County, excluding City of London.

*In order to ensure an appropriate sample size for EDI reporting, municipalities with less than 35 EDI questionnaires were amalgamated. Refer to page 11 for more information.

^ Ontario Early Years Centres: Elgin-Middlesex-London, Lambton-Kent-Middlesex, Perth-Middlesex. Early Development Instrument, Spring 2009, Offord Centre for Child Studies, McMaster University.

-For more information or analyses, refer to page 11 for contact information.

Notes About the Data

Statistics Canada, Random Rounding:

Random Rounding Affect on the Data: In all Statistics Canada products, "procedures are applied to prevent the possibility of associating statistical data with any identifiable individual: the data are randomly rounded and they are suppressed for certain geographic areas. Random rounding is a method whereby all figures in a tabulation, including totals are randomly rounded (either up or down) to a multiple of "5", and in some cases "10". This technique provides strong protection against direct, residual or negative disclosure, without adding significant error to the census data. However, figures on population counts only are not rounded since they provide no information on the characteristics of these populations" (Statistics Canada). Random rounding and suppression should be taken into consideration when reviewing data for municipalities. The data for municipalities is based on the sums of Census data for several smaller geographic areas for which random rounding and suppression may have been applied. Refer to the 2011 Census Dictionary, Appendix C and the 2006 Census Dictionary, Appendix B for more information regarding random rounding for the 2011 and 2006 census.

Social Risk Index (SRI):

Developed in 2001- North York Understanding the Early Years project, the Social Risk Index is a measure of the vulnerability of the community to social problems. It is based on nine factors from Statistics Canada Census of the Population: mobility, education level, proportion of lone- parent families, unemployment rate, proportion of low income residents, home ownership, knowledge of one of the official languages, immigrant status, and reliance on government transfers. For each DA, if the value is unfavourably above (or below) the national average, the DA scores one point. The SRI is a count of the unfavourable scores for that DA; the maximum score is nine . For the purposes of this report, census subdivisions were used instead of DAs, however the same logic applies.

Early Development Instrument (EDI):

What the EDI Results represent: The EDI results have been grouped by municipalities in Middlesex County (excluding London), for community planning purposes. Each EDI record (child) was assigned to a municipality based upon the record's postal code. Results are reported for municipalities with 35 or more records, thus at a group level. In cases where municipalities had less than 35 records, they were combined with a neighbouring municipality to avoid suppression of data. EDI results reported are reflective of the communities in which children reside in their early years, prior to school entry. Please go to page 6 for an EDI description and more definitions.

Credits:

Province of Ontario, Ministry of Children and Youth Services
 Offord Centre for Child Studies, McMaster University
 Ontario Early Years Centres: Elgin-Middlesex-London, Lambton-Kent-Middlesex, Perth-Middlesex
 Participating school boards from cycle 1 and cycle 2 EDI implementations.

For more detailed analysis and information about the Child and Family Profile, please contact:

Data Analysis Coordinators:

Dr. Ken Clarke P: (519) 273-9082 E: kenc@pcfk.on.ca
 Perth-Middlesex Ontario Early Years Centre

Elisa Bararuk P: (519) 786-6161 x222 E: ebararuk@nlchildcare.ca
 Ontario Early Years Centre Lambton-Kent-Middlesex

Elizabeth Gough P: (519) 631-9496 E: e.gough@communitylivingelgin.com
 Ontario Early Years Centre Elgin-Middlesex-London

Ontario Early Years Centres
 A Place For Parents And Their Children.



Centres de la petite enfance
 Un endroit pour les parents et leurs enfants.

