

*75th Annual*  
**Middlesex  
Municipal  
Day**



Hosted by:





**Welcome!**

## **Call to Order & President's Remarks**

Cathy Burghardt-Jesson,  
President, Middlesex Municipal  
Association

# Land Acknowledgement

We acknowledge that the land we stand upon today is the traditional territory of the Attawandaron, Anishinabeg, Haudenosaunee, and Lunaapeewak peoples who have long standing relationships to the land, water and region of Southwestern Ontario. The local First Nation communities of this area include Chippewas of the Thames First Nation, Oneida Nation of the Thames First Nation, and Munsee-Delaware Nation.

We acknowledge the treaties that are specific to this area: Treaty 2 (McKee Purchase), Treaty 3 (Between the Lakes Purchase), Treaty 6 (London Township Purchase), Treaty 21 (Long Woods Purchase) and Treaty 29 (Huron Tract Purchase).

We value the significant contributions, both in the past and the present of local and regional first nations of Turtle Island.

We acknowledge historic and ongoing injustices that indigenous peoples endure in Canada and we affirm our commitment to honouring indigenous voices, nations and cultures, and to moving forward in the spirit of reconciliation and respect.

# MIDDLESEX MUNICIPAL ASSOCIATION

75<sup>th</sup> ANNUAL MEETING

9:00 A.M.



Hosted By:



## MIDDLESEX MUNICIPAL ASSOCIATION

### Board of Directors

President – 2024 Cathy Burghardt-Jesson

### Past Presidents

1948	Neil McGugan	1986	John Whitmore
1949	Neil McGugan	1987	Kevin Vernon
1950	Oliver Amos	1988	Robert Feasey
1951	Norman Stuart	1989	Colin Macpherson
1952	Harold Corbett	1990	Ray Fisher
1953	Mungo Leitch	1991	Glenn Foster
1954	Hugh McEachen	1992	Raymond Wilson
1955	Gordon MacDonald	1993	Jack Moir
1956	John Crawford	1994	Garnet Romphf
1957	George Wilson	1995	Bill Galbraith
1958	Roy Bloomfield	1996	John Quinney
1959	Clarence Fuller	1997	Bob Rowe
1960	Howard Elson	1998	Earl French
1961	Crawford Sutherland	1999	Al Marr
1962	Austin Hodgins	2000	Alan Johnson
1963	Philip Chapman	2001	Don Shipway
1964	Mac Bolton	2002	Leonard Whitlock
1965	Fred Heaman	2003	Mel Veale
1966	Hector Sutherland	2004	Bev Shipley
1967	Wilbert Pretty	2005	Wes Hodgson
1968	James Stewart	2006	Crispin Colvin
1969	Denzil Paterson	2007	Vance Blackmore
1970	Jack Hunt	2008	Al Edmondson
1971	Harry Ward	2009	Charles Corbett
1972	Frank Hamilton	2010	John Milligan
1973	Fraser Harris	2011	Doreen McLinchey
1974	Murray Jones	2012	Tom McLaughlin
1975	Robert Malpass	2013	Ian Wilcox
1976	George Dixon	2014	Joanne Vanderheyden
1977	Ron Crawford	2015	Joel Blackmore
1978	Ray Lewis	2016	Dr. Christopher Mackie
1979	Dougal McCallum	2017	Albert Bannister
1980	Jack McNamara	2018	Diane Brewer
1981	Ivan Hearn	2019	Richard Bolton
1982	Nelson Elliott	2022	Jim Maudsley
1983	Chris McPherson	2023	Ian Brebner
1984	Don Nisbet		
1985	Don McLean		

# 2023 Association Minutes

## MIDDLESEX MUNICIPAL ASSOCIATION MINUTES

9:00 a.m., Tuesday, May 2, 2023

The Association held its 74<sup>th</sup> Annual Meeting at North Middlesex Community Centre, with approximately 90 delegates in attendance representing the County of Middlesex, Lower Tier Municipalities, Conservation Authorities, the Middlesex County Library Board, the Middlesex-London Health Unit, Provincial Ministries and neighbouring municipalities.

### Opening Remarks

Association President, Ian Brebner, opened the meeting and welcomed everyone to the 74<sup>th</sup> Annual Association Meeting.

Brian Ropp, Middlesex County Councillor and Mayor of North Middlesex welcomed everyone to North Middlesex.

### Appointment of Secretary

Moved by Aina DeViet

Seconded by Jim Maudsley

THAT Paul Shipway be appointed Secretary of the Middlesex Municipal Association.

Carried.

### 2022 Association Minutes and Treasurer's Report

Minutes of the Middlesex Municipal Association Annual Meeting held on Thursday, May 12, 2022

Moved by Jim Maudsley

Seconded by Joanne Vanderheyden

THAT the minutes of the Middlesex Municipal Association Annual Meeting held on Thursday, May 12, 2022 be approved as circulated.

Carried.

Moved by Brian Ropp

Seconded by Sue Clarke

THAT the Treasurer's Reports for the period June 1, 2021 to May 31, 2022 be approved as circulated.

Carried.

### 2024 Host Municipality

To be determined by Middlesex County at a later date.

### Presentations

#### **Ausable Bayfield Conservation Authority (ABCA)**

Nathan Schoelner is the Stewardship and Lands Manager at Ausable Bayfield Conservation Authority. He oversees a dedicated team who is passionate about improving watershed conditions and providing outdoor recreation opportunities to the community. Nathan has been with ABCA since 2018. Nathan has also spent time working with other Conservation Authorities in the region. He has grown up locally outside of a rural community, and is passionate about the outdoors & all that it has to offer.

#### **Bog Line Smokers and Sylvan Alpacas**

Nick Ince and his wife Steph together with their 6 year-old Olen have embarked on two business ventures as a family. They own a small alpaca farm outside of Parkhill called Sylvan Alpacas. As a family, they love spending time with the gentle and curious creatures. They invite visitors to their farm for an interactive experience with the alpacas. Nick also owns and operates Bog Line Smokers. He discovered there was a gap in the smoker market here in Canada. His experience

working in the Oil and Gas industry gave him the skill and ideas to manufacture his own premier barbeques. The smoker trend has continued, and they have created a full-time business as a result.

### COFFEE BREAK

#### **Jocelyn Amos**

Jocelyn Amos has grown up on Maguire Rd, Ailsa Craig where she lives with her parents Scott and Sherie and older brothers Cameron and Jacob. She attended Sacred Heart Elementary school in Parkhill and is currently a grade twelve student at Medway highschool. Growing up in a rural community has provided opportunities for hard work and a lot of fun. Over the years she has played on multiple sports teams allowing her to grow and learn about commitment and achieving goals. At a young age she set her goals high always trying to keep up with her older brothers, no matter what the activity was. Most recently, Jocelyn achieved her dream of wearing the maple leaf on her chest for Team Canada's women's U-18 hockey team in 2022 and 2023.

#### **Honeyland Ag Services**

Chris Roelands is the President of Honeyland Ag Services, an agricultural lab that specializes in analysis of Soil, Plant Tissue, Feed and Forage, Water and Manure. Chris is a certified crop advisor with the 4R nutrient stewardship designation. He, and the rest of the team at Honeyland Ag Services, are passionate about understanding nutrient interactions between the soil and the plant and understanding where yield comes from. Today's presentation will focus on just that! Over the last 10 years Honeyland Ag Services has been experimenting with many new tests to improve our understanding of soil and plants. Chris will give an overview of the lab and detail new parameters and tests that are on your reports that can help you find the path to higher yield!

#### **Ailsa Craig Art Centre**

Shelagh Morrison has been a resident of North Middlesex since 2014 and a farm property owner since 2010. She was originally introduced to the Ailsa Craig Community as a visitor to the Ailsa Craig Quilt & Fibre Arts Festival in 2009. Since moving to Ailsa Craig in 2014, Shelagh joined the East Williams Optimists, served on the Middlesex Community Futures Board, served on North Mid Economic Development until Covid and, co-chaired the Sesquicentennial Ailsa Craig Quilt & Fibre Arts Festival and eventually chaired, The Quilts of Iceland and The Quilts of New Zealand Festivals. In 2017, Shelagh was one of the members of the "Front Porch Gang"; a group of long term Festival organizers who conceived and launched the Ailsa Craig Arts Centre. She chaired the ACAC for the first two years and currently serves on the board while organizing all the classes and grant applications. In her spare time, Shelagh and her husband Bill enjoy sailing on Lake Huron and raising Canadian Horses on their heritage farm on the banks of the Ausable River.

### STATE OF THE UNION

The meeting closed with a State of the Union address from Middlesex County Warden Cathy Burghardt-Jesson who highlighted some of the important work undertaken by the County over past year.

### CLOSING REMARKS

President Ian Brebner thanked everyone for attending.

\_\_\_\_\_  
Paul Shipway, Secretary

\_\_\_\_\_  
Ian Brebner, President

# 2023 Association Treasurer's Report

## MIDDLESEX MUNICIPAL ASSOCIATION

### Statement of Receipts and Expenditures May 31, 2022 to June 1, 2023

#### Credits

Balance carried forward June 1, 2022	\$1,979.35
2023 Bank Interest	116.73
2022 Membership Fees	2,850.00
2023 Membership Fees	2,500.00
	<u>\$7,446.08</u>

#### Expenses

2022 Meeting Expenses	\$4,479.89
Deposit Book for MMA	26.81
Bank Balance May 31, 2023	2,939.38
	<u>\$7,446.08</u>

#### Notes:

2023 Meeting Expenses payable of \$2,960.94 withdrawn after May 31, 2023 will be reflected in 2023/24 Financial Statements.

# Host of the 2025 Middlesex Municipal Association Meeting



STRATHROY-CARADOC

*URBAN OPPORTUNITY - RURAL HOSPITALITY*



# Goldie Innovative Technologies

Nolan Goldie, CEO, Chief Engineer  
and Product Architect





*GOLDIE INNOVATIVE TECHNOLOGIES*



# CONTENTS

- INTRODUCTION
- BUSINESS
  - Division Outlooks
  - Recycling Program
  - Product and Programs
- GIT - NIGHT FURY
- WHAT'S NEXT
- QUESTIONS



*GOLDIE  
INNOVATIVE  
TECHNOLOGIES*



# INTRODUCTION

Company Outlook

Goldie Innovative Technologies Inc. was founded in 2020 (G I T)

We are an Industrial Design Facility.

Based on inspirations to make any market better from our open box concepts.

We are about making connections and showing what we can offer in this world to all industries.

Great High-Quality Service, Products, and most importantly...the EXPERIENCE!



Innovation – It's not just in our name, but it is what is in our blood. We are heavily focused on our Research and Development and in our industry, Southwestern Ontario is critical! The environment gives us the ability to understand the radical changes for all real-world applications to truly benefit our R&D.

# BUSINESS

## Our Process

- In-house Manufacturing Process
- Lean Manufacturing Methodology
  - Advanced Manufacturing
  - Computer Aided Design
- Recycling Program
- Environmental Testing Studies
- Design Studio
- Development of new ground breaking products

**PERFORMANCE • EFFICIENCY • EFFECTIVENESS**

*GOLDIE*

*INNOVATIVE*

*TECHNOLOGIES*



## Automotive Designing Division

- Division opened in late 2023
- Consultation
- Design
- Build
- Ergonomic fit
- Electric Vehicle conversions
- Aerodynamic Studies

## Advanced Technology Division

- Humanitarian Efforts
  - Low Maturity
  - High Impact value
- Greener Technology implementation.
- Sustainability



# RECYCLING PROGRAM

Repair to Original Fit  
Series of methods

Non-Repairable  
Break down and dispose of correctly  
No waste in landfills

**GOLDIE**  
**INNOVATIVE**  
**TECHNOLOGIES**



# AUTOMOTIVE DESIGNING DIVISION

Division Outlook

Division opened in late 2023

Consultation

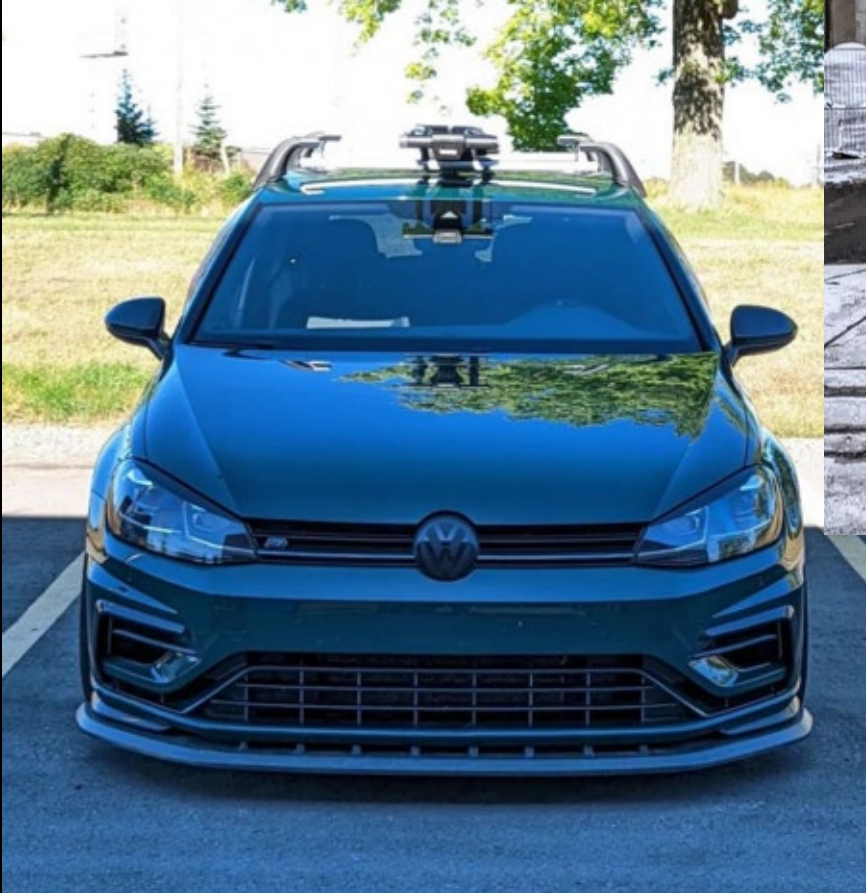
Design

Build

Ergonomic fit

Electric Vehicle conversions

Aerodynamic Studies



G I T – OEM + Carbon Fiber line.

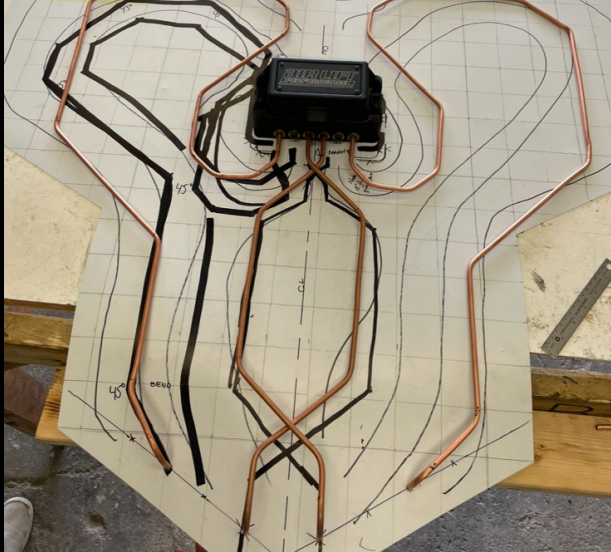




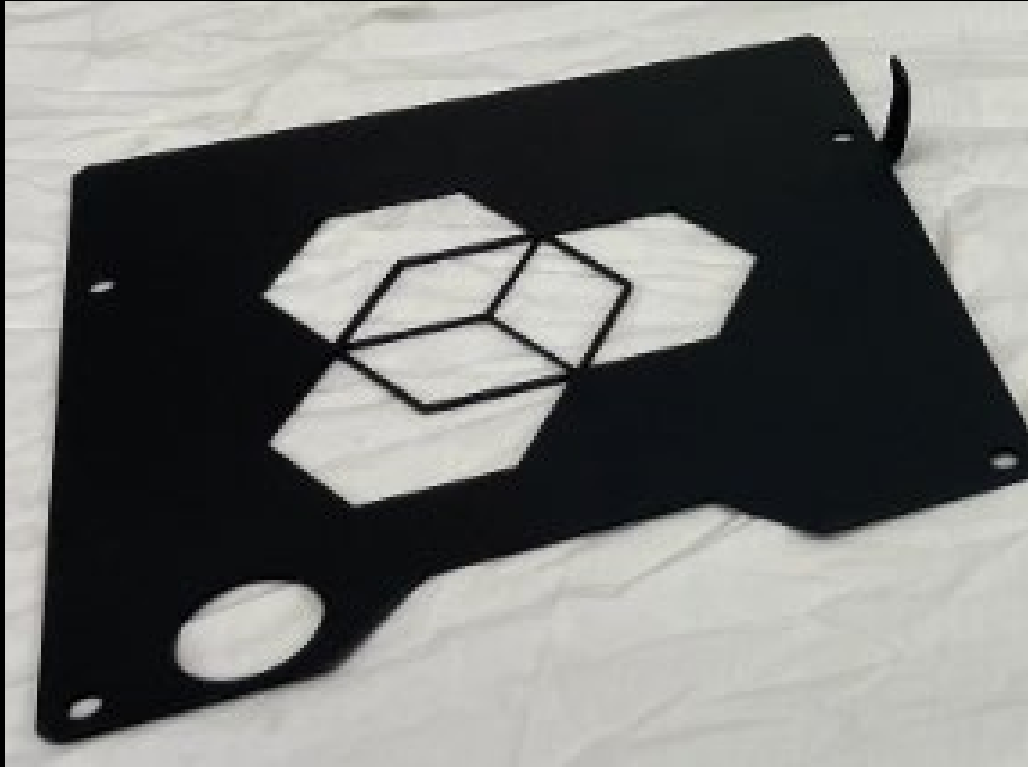
Offlander Beetle with Pre-Runner bar.



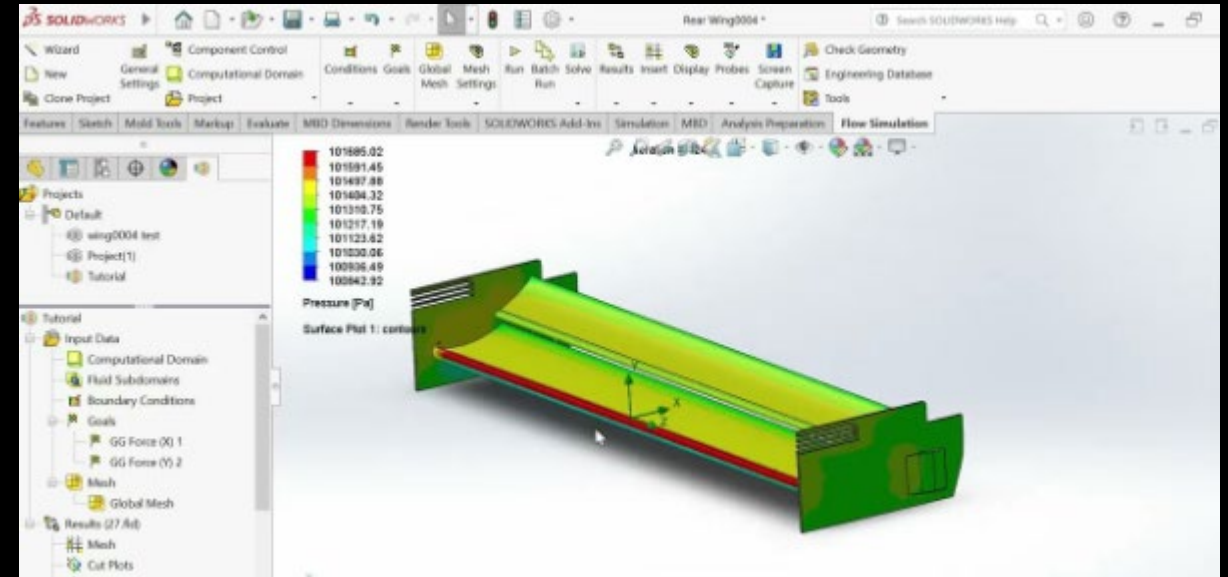
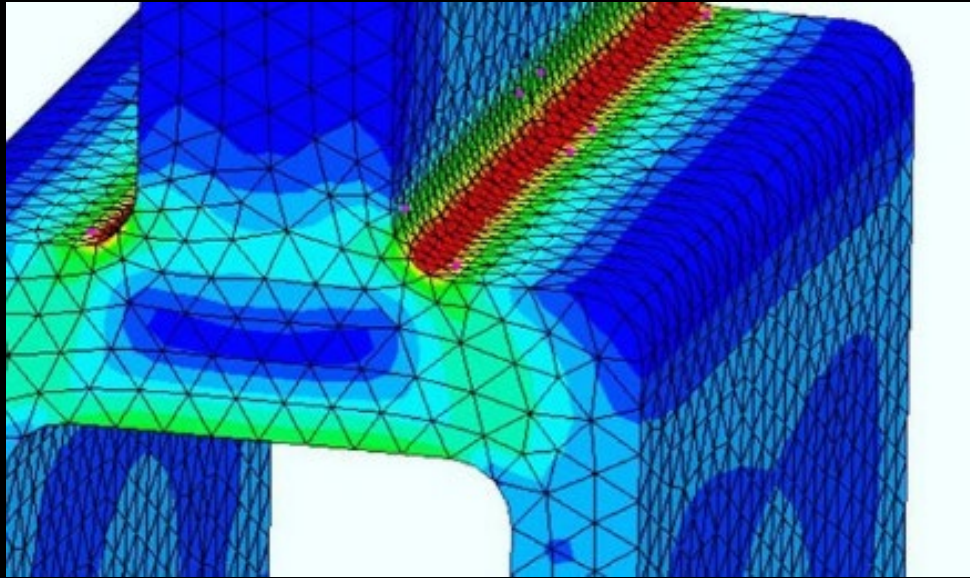
Subaru BRZ Aerokit



2009 VW GTI – Widebody and full Forged Carbon Fiber



G I T – VW- AUDI Seat Base



# NIGHT FURY

DEFYANT



DEFIANT



944

NIGHT FURY

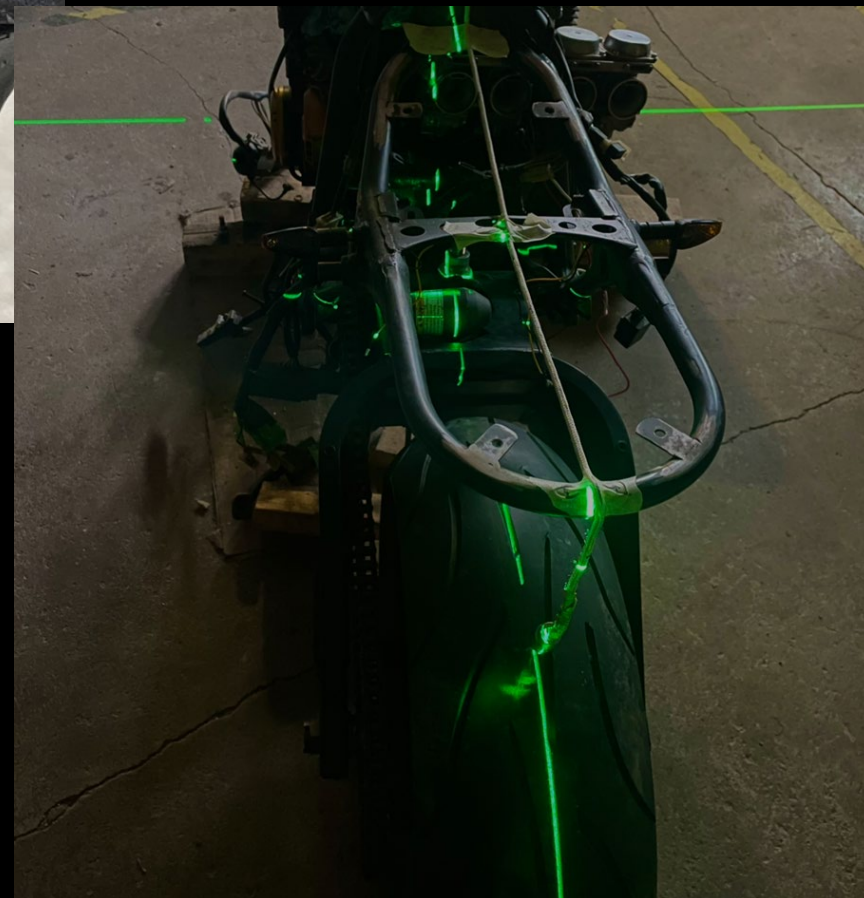
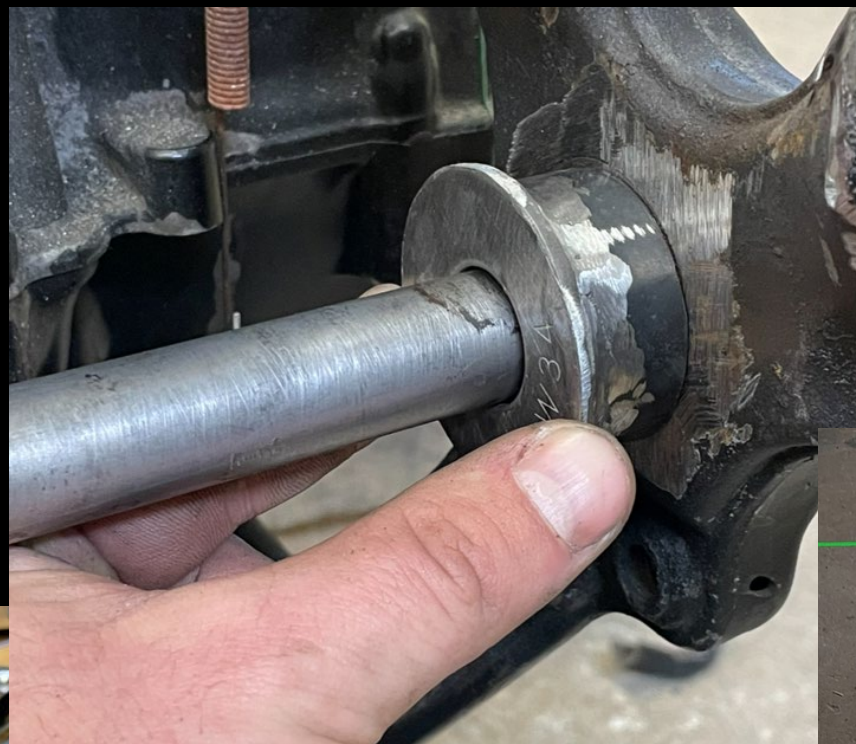


1984 Honda CB750



Design Story board





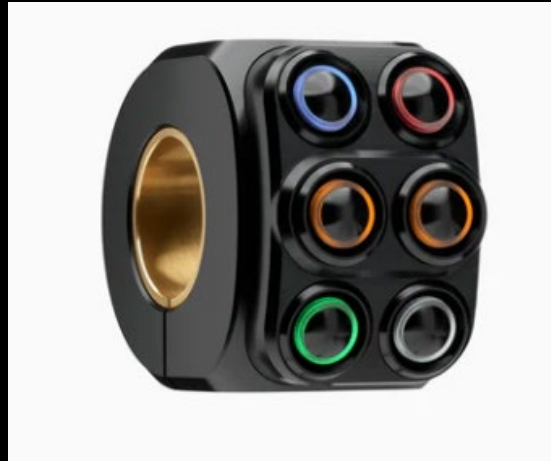
Overhaul Progress



# CHANGES



Top Yoke Instrument



Controls



Adjustable Foot Peg



# PROJECTIONS

For 2024, we are aiming for 20 sales of the Night Fury program, with 2025 ramping to 50 bikes.

Cost \$50,000 - \$75,000 CAD

Lead Times: ~ 12-15Months (Total)

1 of 1 unique bikes for each unique client

*GOLDIE*

*INNOVATIVE*

*TECHNOLOGIES*



# WHAT'S NEXT?

- Secure funding
- Growth with skilled individuals
- Hosting events
  - Seeking out bright new talent
- Free daycare exclusive to G I T employees
- Educate children on solving world problems
  - Impact due to their morals and ethics

***GOLDIE***

***INNOVATIVE***

***TECHNOLOGIES***



QUESTIONS?

THANK YOU



Nolan Goldie



519-694-7367



[info@goldieinnotech.ca](mailto:info@goldieinnotech.ca)

# Community Employment Choices

Julie Bullock, Operations Manager



COMMUNITY EMPLOYMENT CHOICES  
(CEC)

# Middlesex Municipal Day 2024

---

PRESENTED BY: JULIE BULLOCK, OPERATIONS MANAGER

*Community*  
**EMPLOYMENT**  
*choices*

# ABOUT COMMUNITY EMPLOYMENT CHOICES (CEC)

Dedicated to empowering individuals and strengthening communities in Middlesex County by providing comprehensive employment services and support.

# LOCATIONS

## **Main Location:**

- 16B Second Street, Strathroy

## **Itinerant Site Locations:**

- Lucan Library
- Parkhill Library
- Glencoe Library
- Dorchester Library
- Quad County Support Services, Wardsville
- Komoka Library
- Ilderton Library
- Mount Brydges Library
- Newbury Library

# MISSION

Community Employment Choices supports businesses and job seekers in meeting the labour market needs of Middlesex County with: job training information, career planning, job search support, job placement opportunities and incentives, as well as referrals to community resources.

# PROGRAMMING

- Resource and Information Assistance
- Employment Counselling
- Job Development
- Retraining Opportunities
- Financial Supports – Employer and Job Seeker

# DIVERSE PROFILES OF INDIVIDUALS SERVED – PROFILE 1

Background: 52 year old individual with previous work experience in customer service

Challenges: Lack of updated skills and training for current job market demands

CEC Impact: CEC provided training and skills development, leading to successful re-entry into the workforce.

# DIVERSE PROFILES OF INDIVIDUALS SERVED – PROFILE 2

Background: 23 year old individual with limited formal education

Challenges: Difficulty finding stable employment due to lack of credentials

CEC Impact: CEC offered educational support and job placement assistance, resulting in sustainable employment

# DIVERSE PROFILES OF INDIVIDUALS SERVED – PROFILE 3

Background: 30 year old individual with a physical disability

Challenges: Accessibility barriers in the workplace

CEC Impact: CEC facilitated workplace accommodations and job matching, enabling successful employment



# DIVERSE PROFILES OF INDIVIDUALS SERVED – PROFILE 4

Background: 40 year old individual

Challenges: Re-entering workforce

CEC Impact: CEC facilitated career exploration activities, job search, and job development resulting in competitive employment

# COMMUNITY IMPACT

\*demonstrated over the past 10 years

\$1,250,000 + *and  
growing*

10 years of investment  
into the Middlesex  
County community

*Community*  
**EMPLOYMENT**  
*choices*

# CELEBRATING SUCCESS

One Client at a Time

*“Thank you endlessly for your help again. I feel like I have a life and purpose now. I'm very fortunate.”*

# THANK YOU

---

For further information on CEC  
programs and services:



519-245-4500



[info@communityemploymentchoices.ca](mailto:info@communityemploymentchoices.ca)



[www.communityemploymentchoices.ca](http://www.communityemploymentchoices.ca)

# Crunican Orchards & Generations Cider Co.

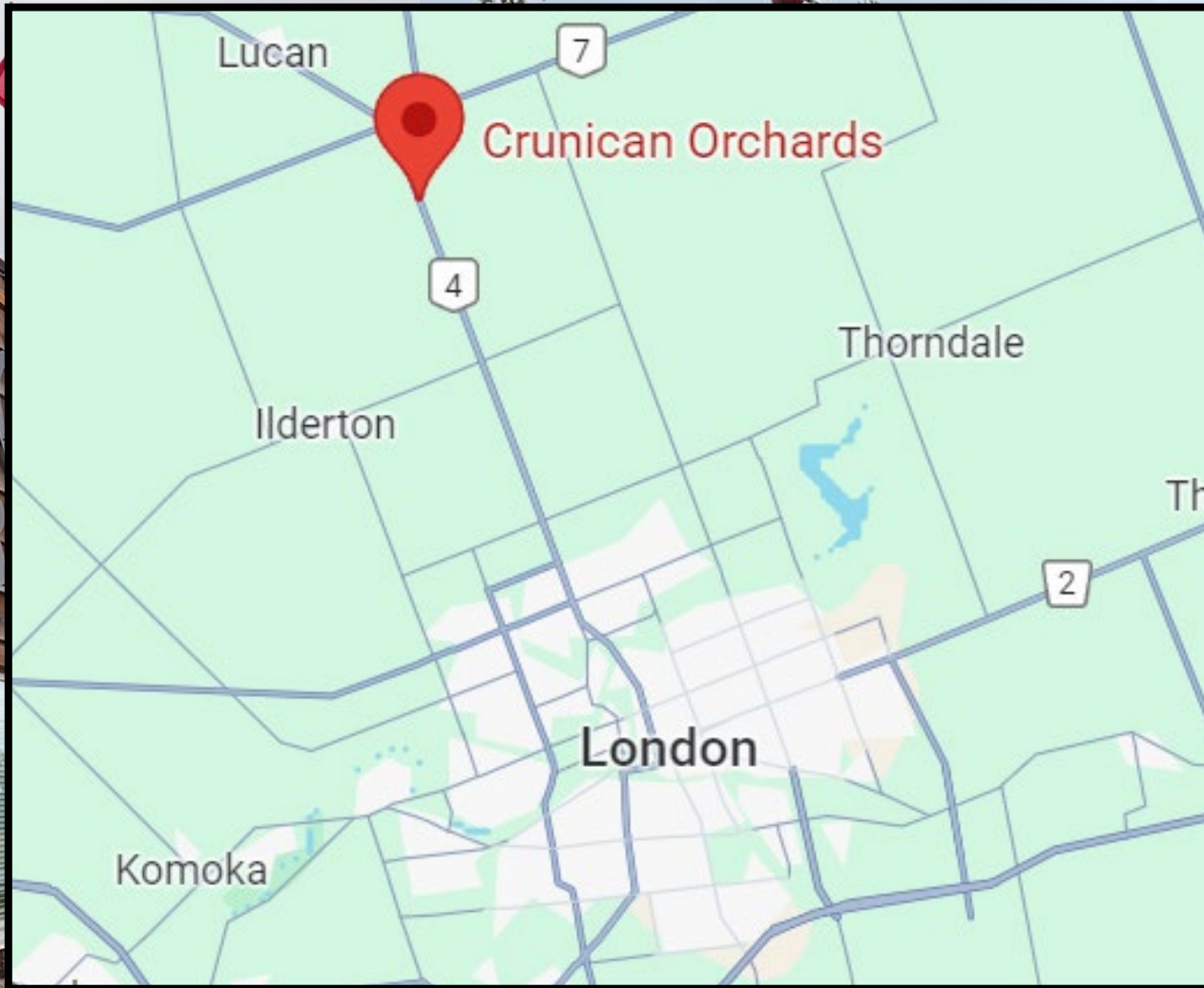
Colleen Crunican



GENERATIONS

CIDER CO.









1

- 1950 -

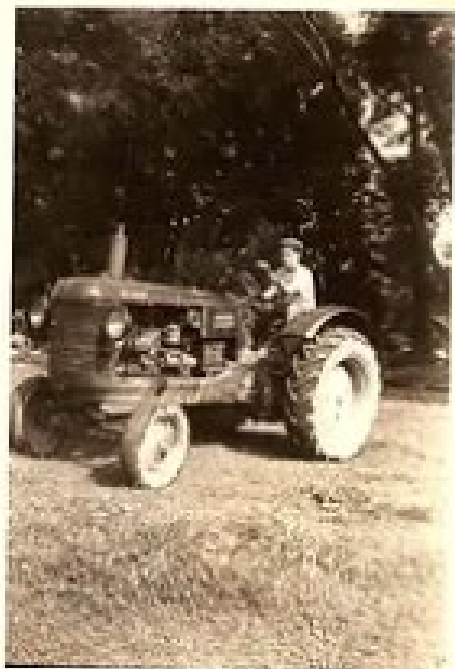


Reciprocity in Apples

This is the season when apple growers have their attention to the



Springing in 1940.



Plowing





To continue our family's story...





**GENERATIONS**  
CIDER CO.

**1910 ORIGINAL**  
DRY CIDER

750ml | 6.5% alc/vol

**GENERATIONS**  
CIDER CO.

**FIFTH BRANCH**  
OFF-DRY CIDER

750ml | 5.5% alc/vol

**GENERATIONS**  
CIDER CO.

**BACK FORTY**  
POPPED CIDER

750ml | 6.5% alc/vol

# 1910 ORIGINAL

DRY CIDER | 6.5% alc./vol.



# 1910 ORIGINAL

Our first apple trees were planted on the farm in 1910.

The only Original tree remaining from this planting inspired the design of our logo.



# 1910 ORIGINAL

DRY CIDER | 6.5% alc./vol.

Tasting Notes: Crisp, apple forward, hints of citrus.

A true dry cider.

Perfect addition to a mimosa!



# FIFTH BRANCH

OFF-DRY CIDER | 5.5% alc./vol.





# FIFTH BRANCH

As the Fifth Branch of our family, we are committed to honouring our roots by carrying on the traditions and teachings of the generations before us.



# FIFTH BRANCH

OFF-DRY CIDER | 5.5% alc./vol.

Tasting Notes: Fresh, light, apple notes.

A crowd pleaser.

Sweet, but not too sweet!



# BACK FORTY

HOPPED CIDER | 6.5% alc./vol.



# BACK FORTY

The “Back Forty” of our farm is edged by a woodland where our family continues to create many memories.



# BACK FORTY

HOPPED CIDER | 6.5% alc./vol.

Tasting Notes: Tropical and apple notes, hop flavours.

A favourite at farmer's markets.

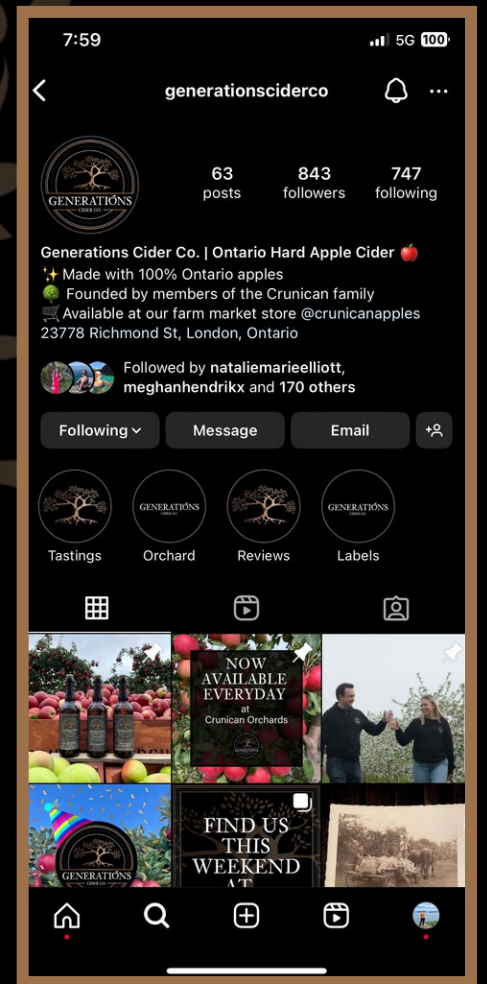
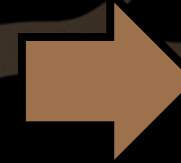
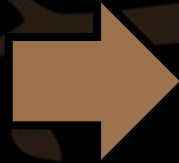
We suggest you try it, even if you don't love hops!





ROOTED IN TRADITION,  
FLOURISHING THROUGH  
GENERATIONS.

Follow us  
on social  
media!



@generationsciderco | Generations Cider Co.

Thank you!





# Break

# Arvaspring Farms Ltd.

Dale Donaldson, Owner



Specialty Poultry Enterprise in  
Middlesex and Huron Counties

Dale Donaldson

- Diversified family owned and operated agri-food business
- Vertically integrated specialty poultry processor
- Diverse species not within supply management



Breeder Flock



Hatchery



Grower Flocks



Processing



Distribution  
Food Service Wholesale  
Ethnic Retail



Ilderton Home Farm



Brucefield Breeder Farm



Chinese Goose



Pekin Duck





Muscovy Duck



Silky Chicken



Wenchang Chicken

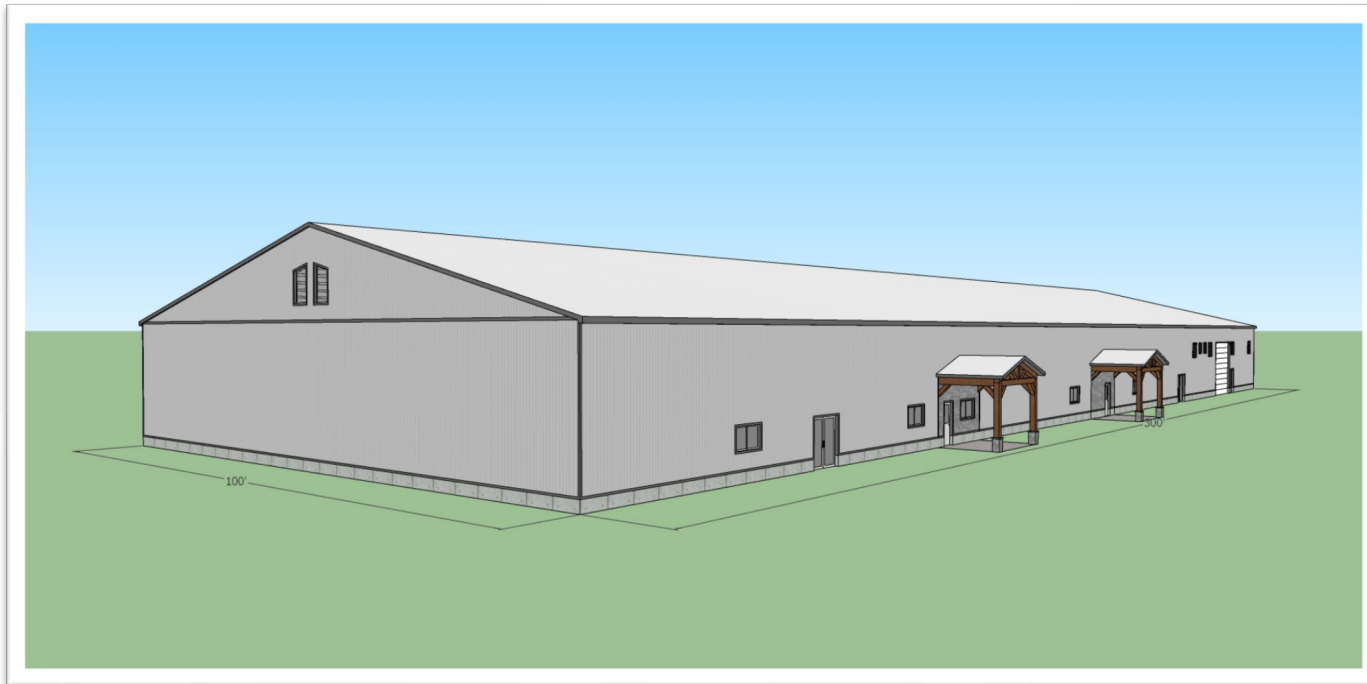


Chukar Partridge

# Lucan Poultry Processing Plant

## Sustainability Highlights

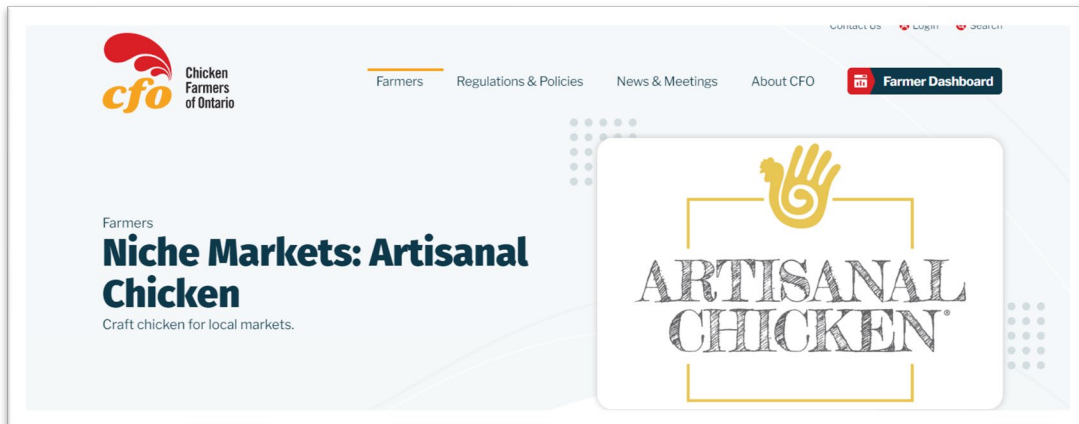
- Reduced Carbon footprint
- Solar equipped
- CO2 refrigeration



# Future Growth Plans and Local Impact

## Local Employment Opportunities

- Up to 40 employees when fully operational
- Supply chain from local farms
- Specialty small flock opportunities



## Growing Market Demand

- 1.3 million people immigrated to Canada between 2016-2021\*
- 62% from Asia
- 44% settled in Ontario

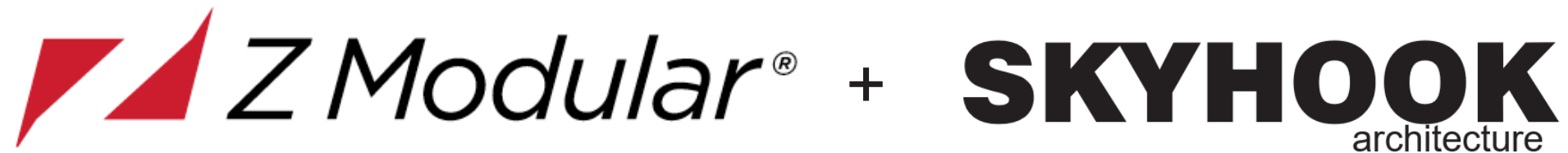


Thank You!

# Z Modular Group

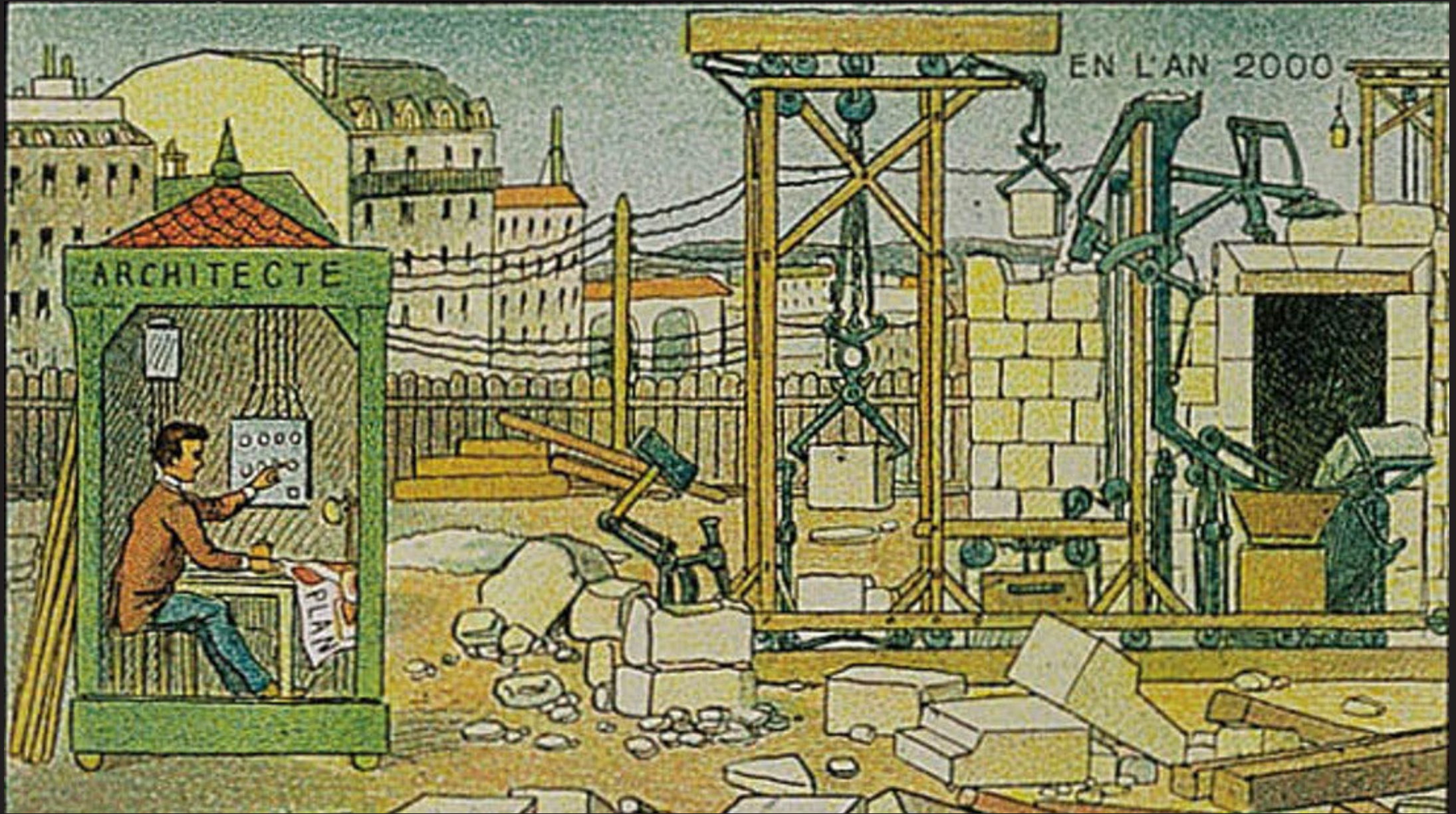
Allison Barnes, Project Manager

# Modular Housing



**Allison Barnes**, CET, PMP  
Senior Project Manager









**Concrete Modular Habitat 1967**

**Habitat 1967, Concrete Modular**

# Shipping Container Housing In Copenhagen







© copyright SHoP Architects

### B2 Housing, Brooklyn





42-storey Housing in London, UK

# ONTARIO REGULATORY FRAMEWORK

## CSA A277

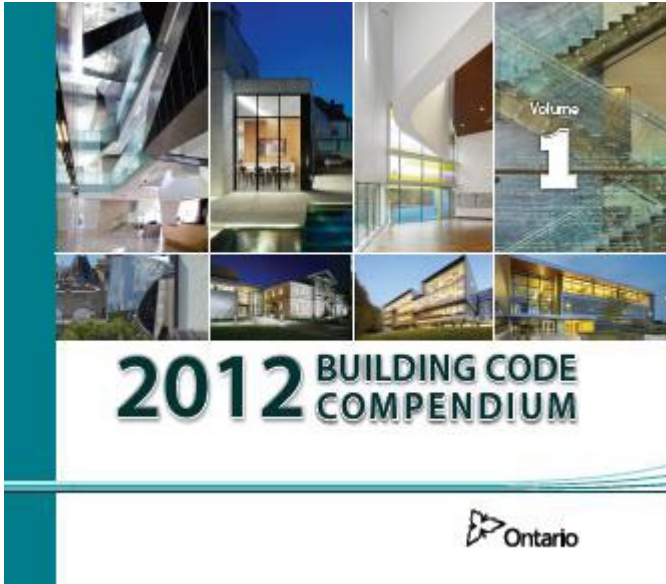
A277 certifies the Plant to perform Quality Inspections ensure code compliance *for buildings of any size or occupancy.*

## CSA Z250

Z250 provides additional guidelines to ensure planning, logistics and site operations integrate with A277 and the needs of Building Code.

## OBC Part 3

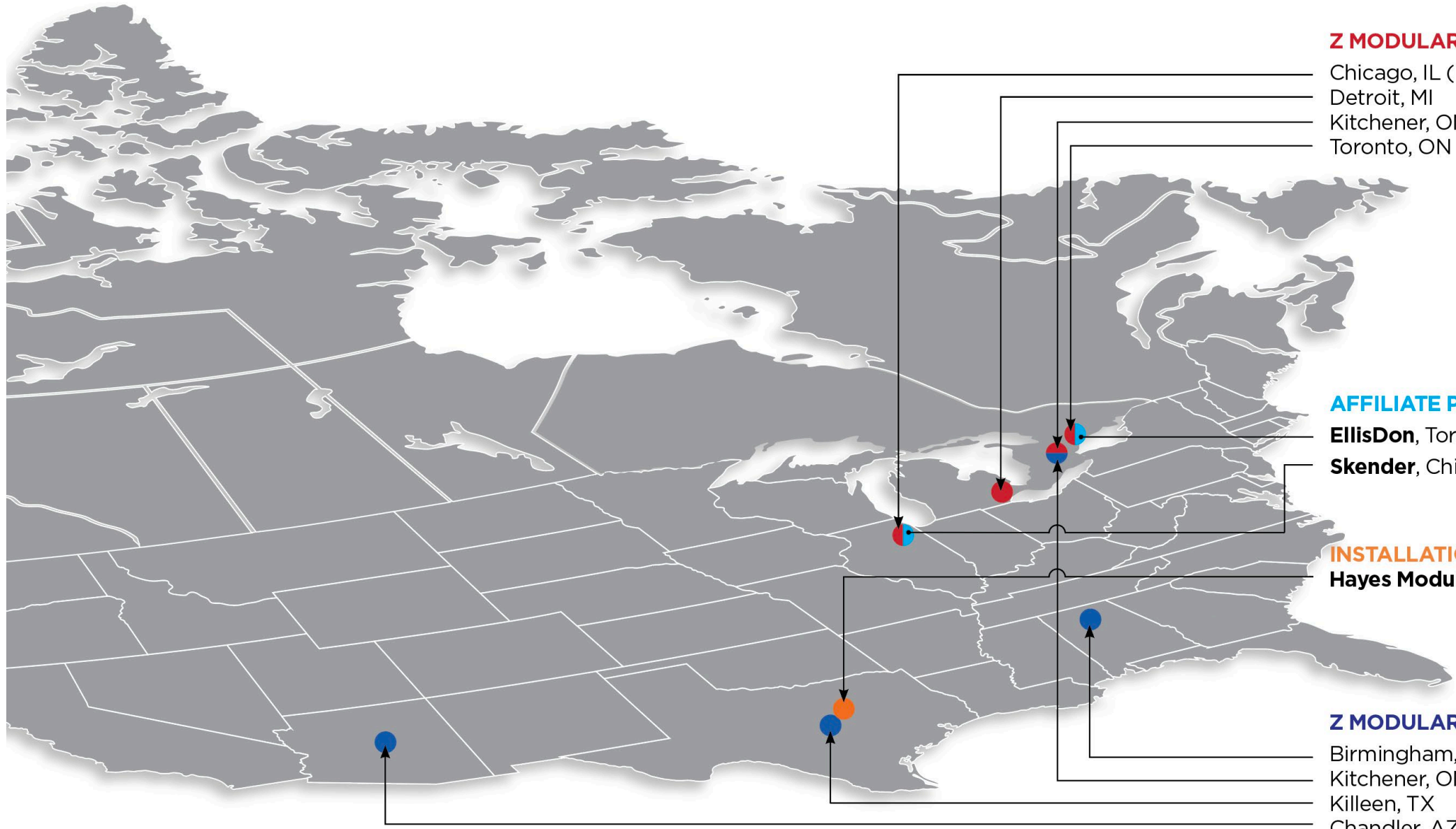
OBC 1.12.1.1.(1):  
“a manufactured part of a building within the scope of Part 3, is deemed to comply with this Code, if it is certified in accordance with A277.”





Vertically integrated housing  
Owner-operator  
Land Developer  
Architect  
Constructor  
Fabricator  
Tube manufacturer





**Z MODULAR DESIGN OFFICES:**

- Chicago, IL (HQ)
- Detroit, MI
- Kitchener, ON
- Toronto, ON

**AFFILIATE PLANTS:**

- EllisDon**, Toronto, ON
- Skender**, Chicago, IL

**INSTALLATION TEAM:**

- Hayes Modular**, Austin, TX

**Z MODULAR PLANTS:**

- Birmingham, AL
- Kitchener, ON
- Killeen, TX
- Chandler, AZ





# Modular Housing Advantages

1. Factory Labour
  - safe & consistent
  - high quality through CSA A277
2. Automation
  - faster and safer
  - standardized components
3. Product Line
  - pre-approved units meet code
  - continuous delivery
4. Generative
  - advanced development tool
  - design & plant integration

Changes in the  
Construction Labour  
Force in Canada by 2027



Net new positions needed

**+15,880**

Expected retirements

**-155,967**

Expected new entries

**+142,847**

Forecast jobs gap:

**29,000**



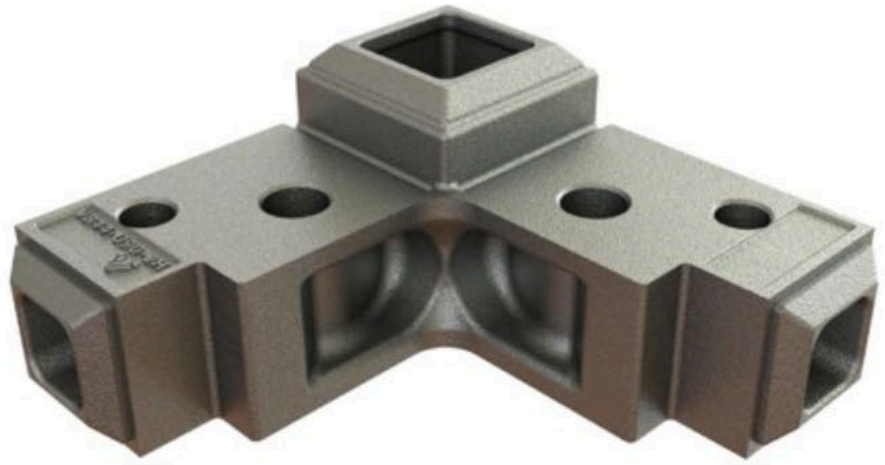
Revised to 100,000  
storage in 5 years

# Modular Automation

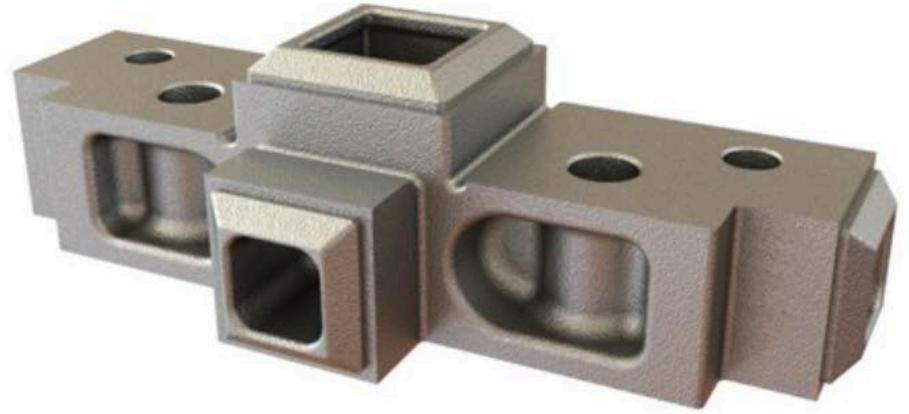
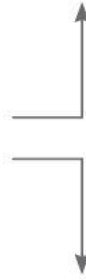


Sector	Overall digitization	Hard-ware	Soft-ware	Tele-com	IT ser-vices	Hard-ware assets	Soft-ware assets
ICT	Dark Green	Light Green	Light Green	Light Green	Light Orange	Light Green	Light Green
Media	Dark Green	Light Green	Light Green	Light Green	Light Green	Light Green	Light Green
Professional services	Dark Green	Light Green	Light Green	Light Green	Light Green	Light Green	Light Green
Finance and insurance	Dark Green	Light Green	Light Green	Light Yellow	Light Green	Light Green	Light Green
Wholesale trade	Light Green	Light Green	Light Green	Light Yellow	Light Green	Light Green	Light Green
Utilities	Light Green	Light Orange	Light Green	Light Orange	Light Orange	Light Orange	Light Orange
Oil and gas	Light Green	Light Orange	Light Orange	Light Orange	Light Green	Light Orange	Light Orange
Advanced manufacturing	Light Green	Light Green	Light Yellow	Light Orange	Light Orange	Light Yellow	Light Green
Government	Yellow ●	Light Yellow	Light Yellow	Light Yellow	Light Green	Light Green	Light Orange
Real estate	Yellow ●	Light Orange	Light Orange	Light Green	Light Yellow	Light Yellow	Light Orange
Basic goods manufacturing	Orange	Light Orange	Light Orange	Light Orange	Light Orange	Light Orange	Light Yellow
Health care	Orange	Light Yellow	Light Yellow	Light Yellow	Light Yellow	Light Orange	Light Yellow
Mining	Red	Light Orange	Light Yellow	Light Orange	Light Orange	Light Orange	Light Orange
Construction	Red	Light Yellow	Light Orange	Light Orange	Light Orange	Light Yellow	Light Yellow
Hospitality	Red ●	Light Orange	Light Orange	Light Orange	Light Orange	Light Orange	Light Orange
Agriculture and hunting	Red	Light Orange	Light Orange	Light Orange	Light Orange	Light Orange	Light Orange

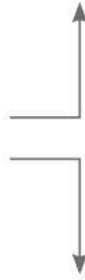


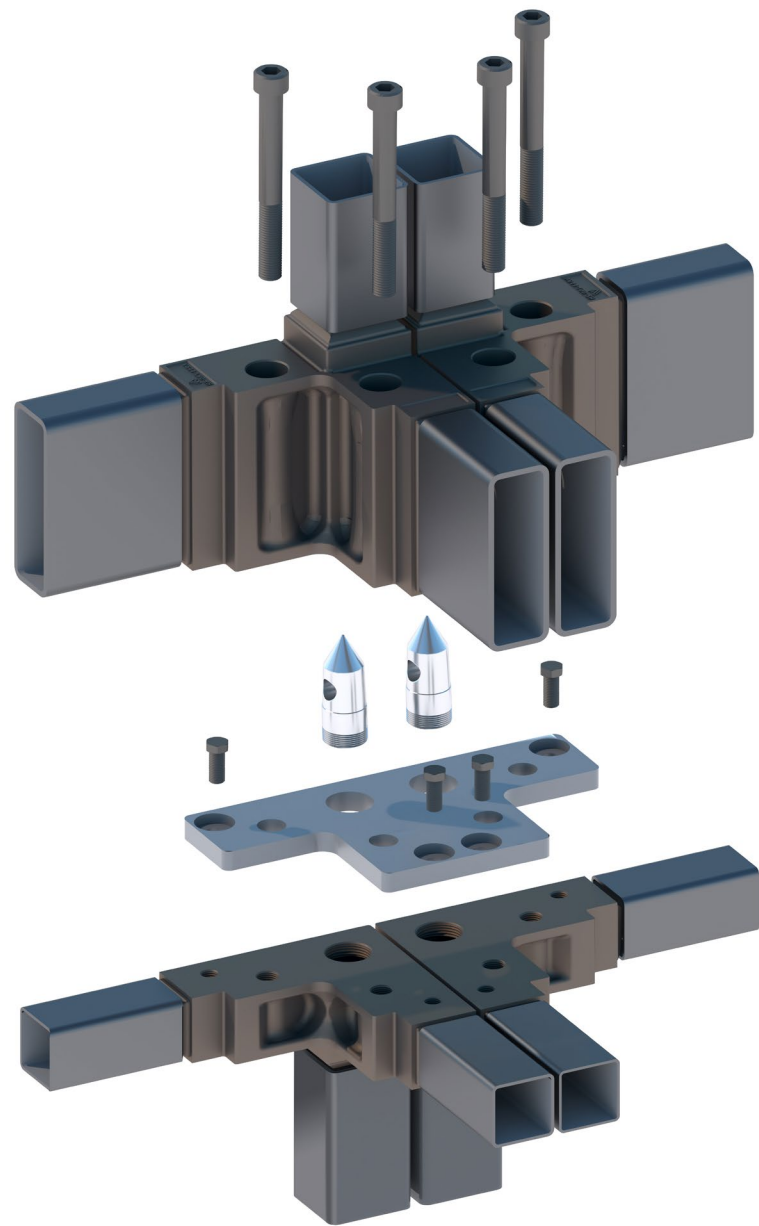
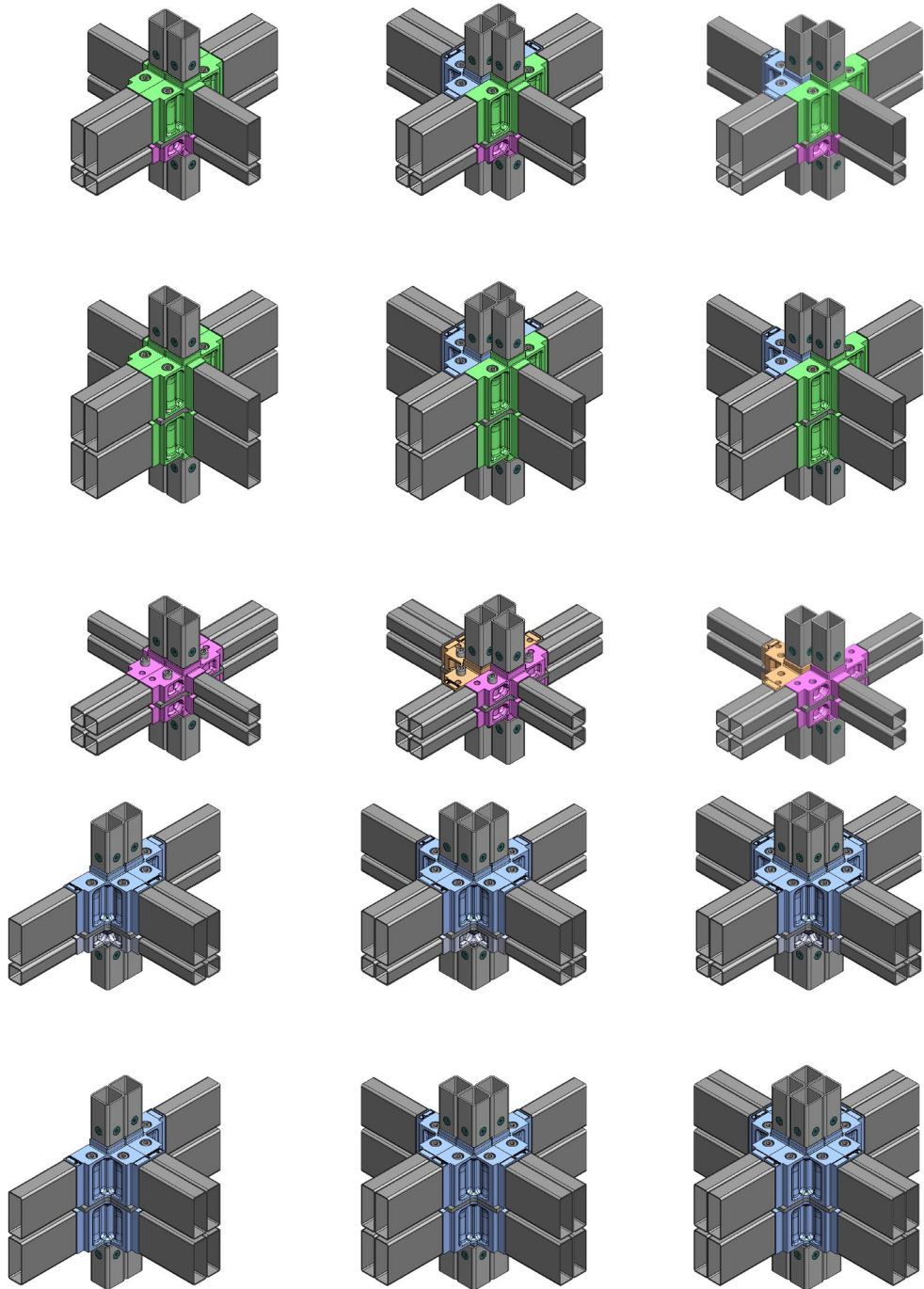


VECTORBLOC 4" 90°



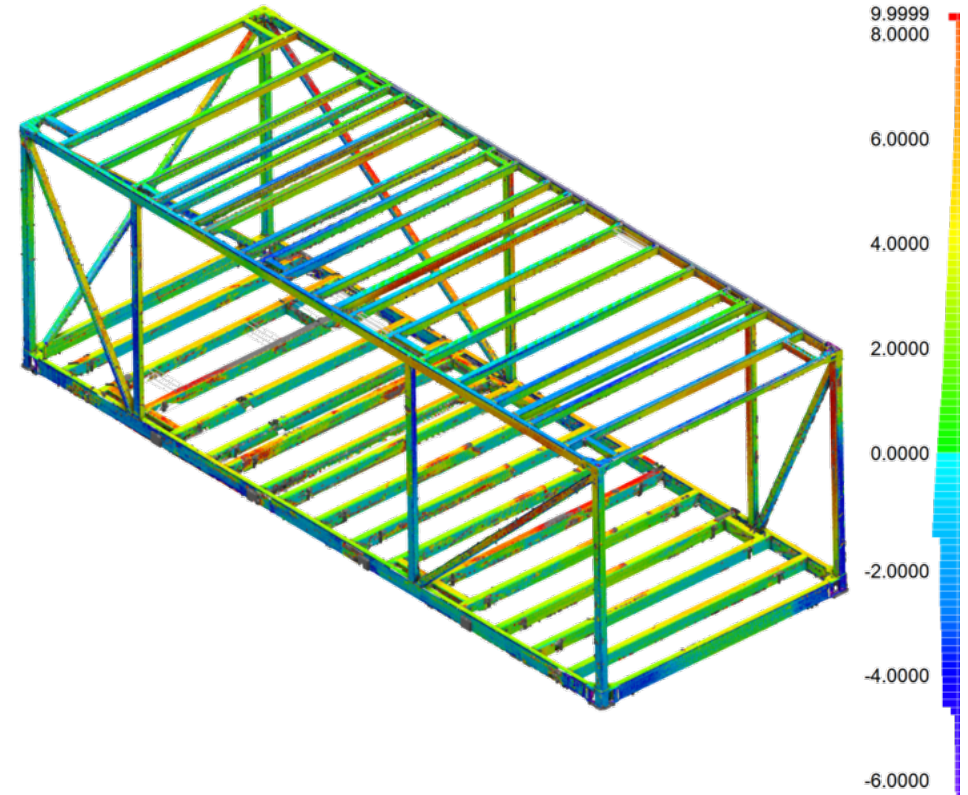
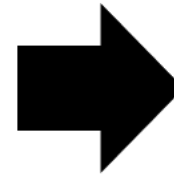
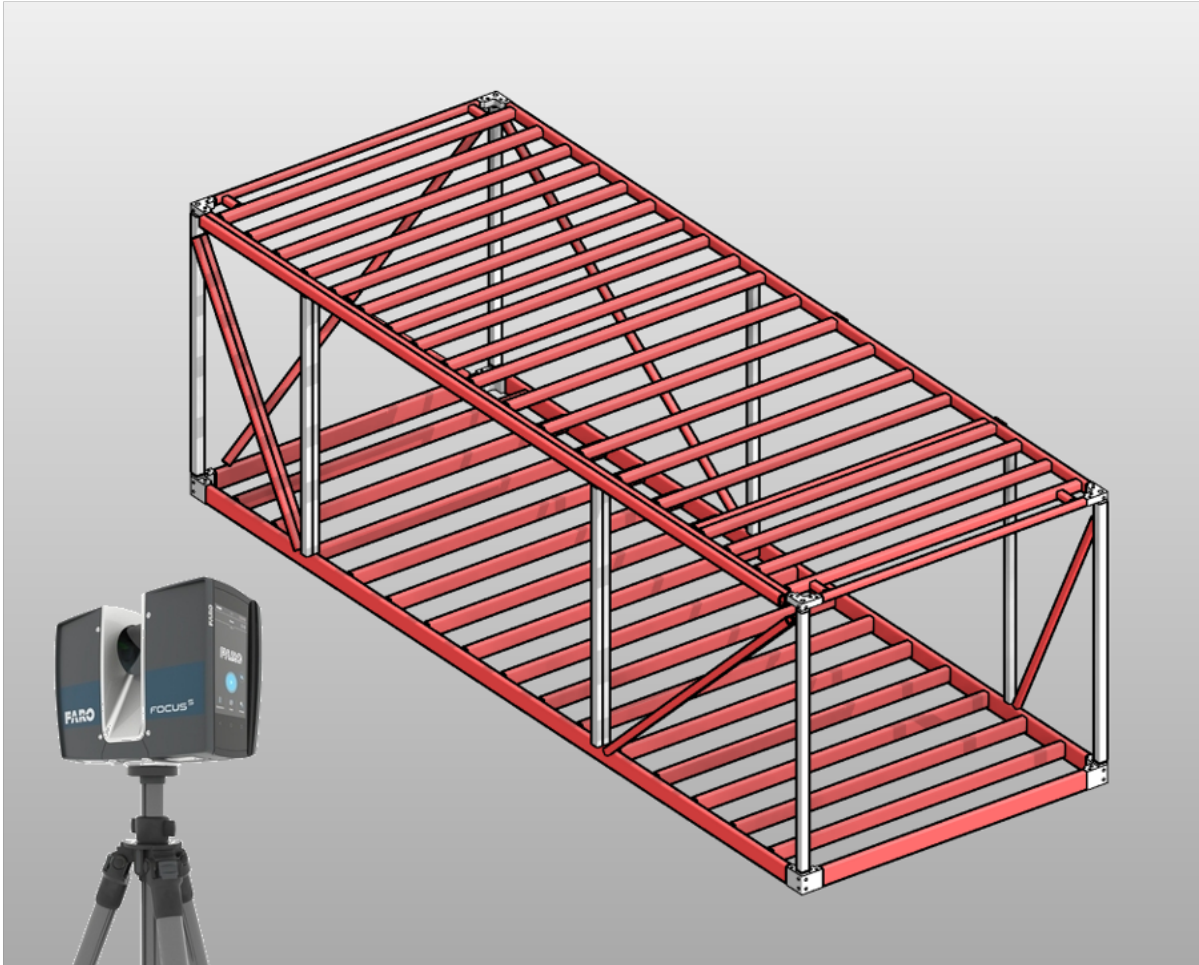
VECTORBLOC 4" 180°





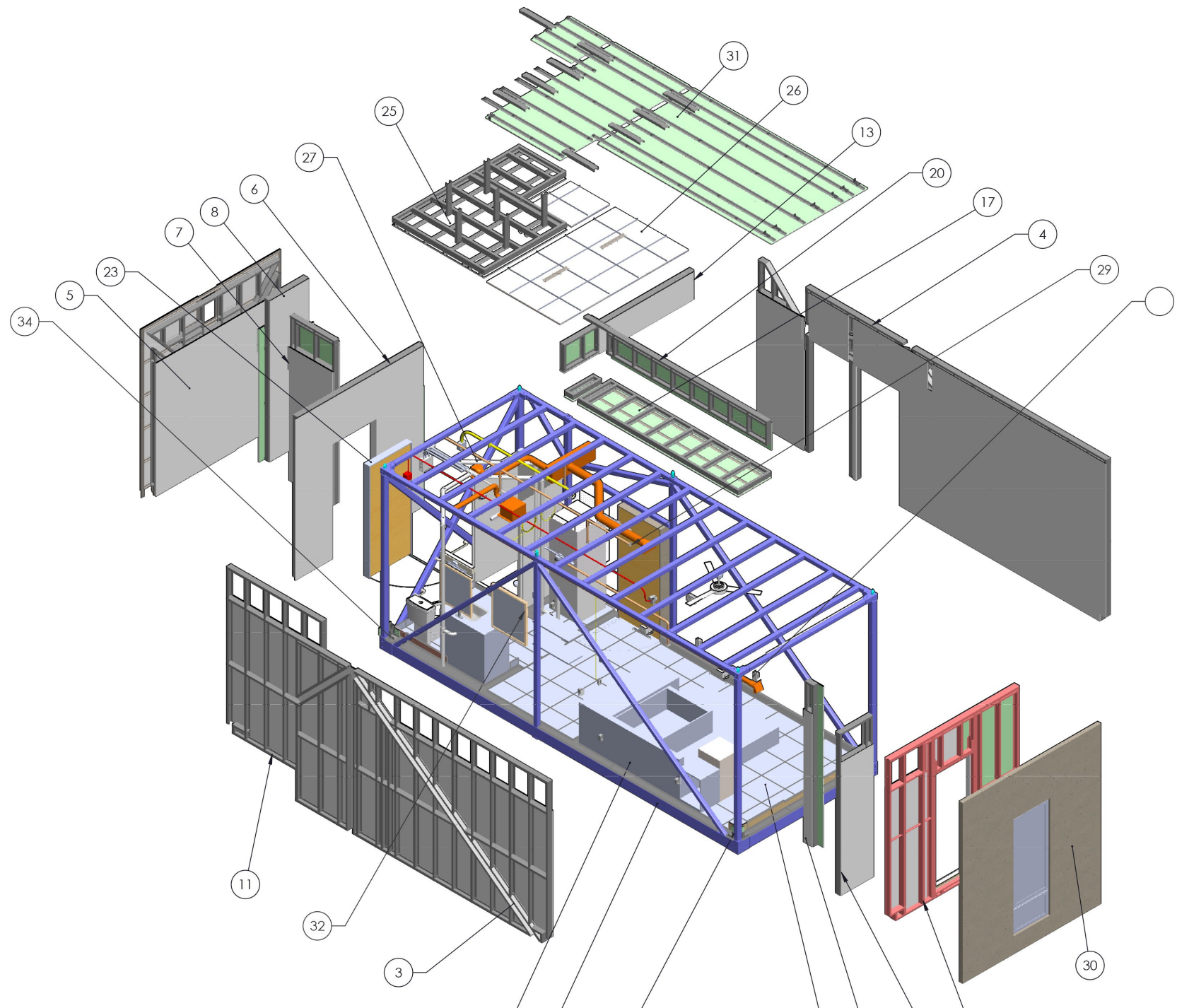


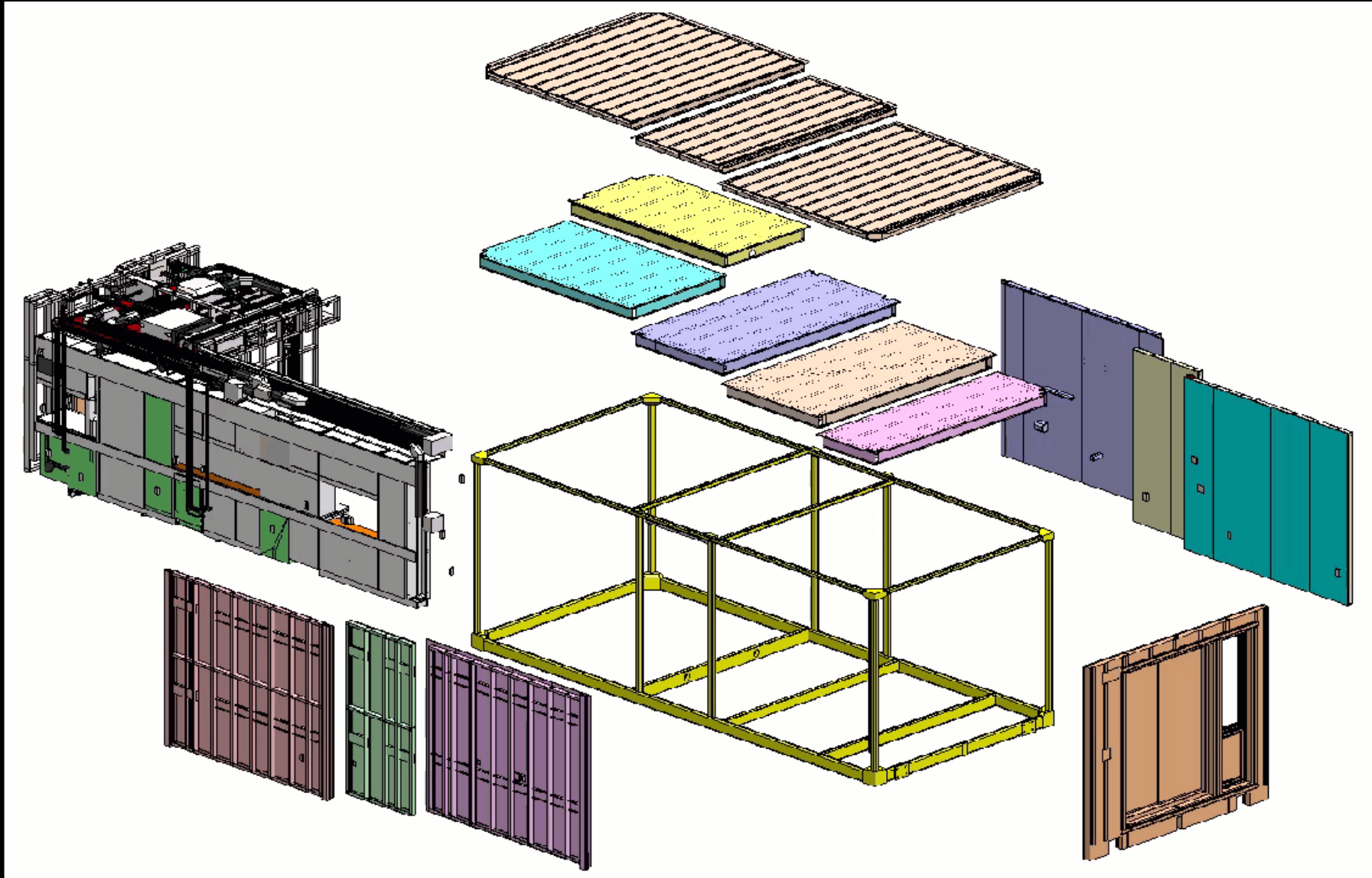
# QA/QC using LIDAR



Data from lidar is compared with BIM model to map the 'as-built' deviations.











**Z Modular Alabama Factory**



# Z Modular Student Housing, near Austin Texas



**Z Modular Student Housing, near Austin Texas**

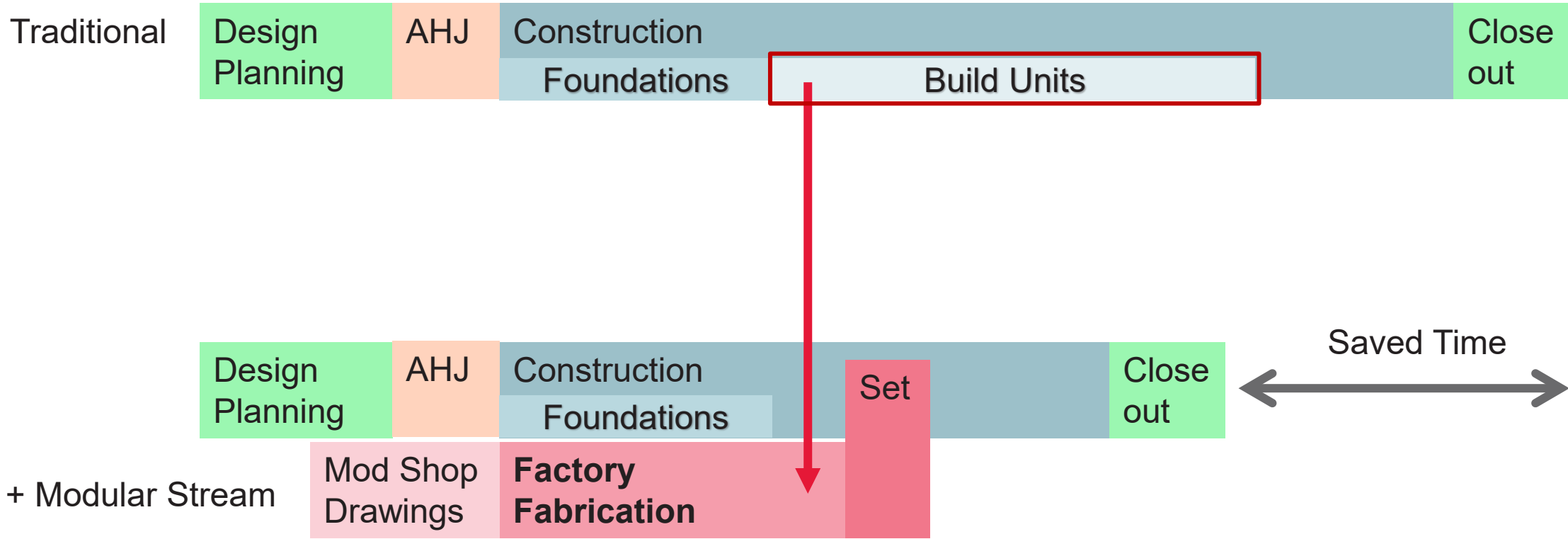




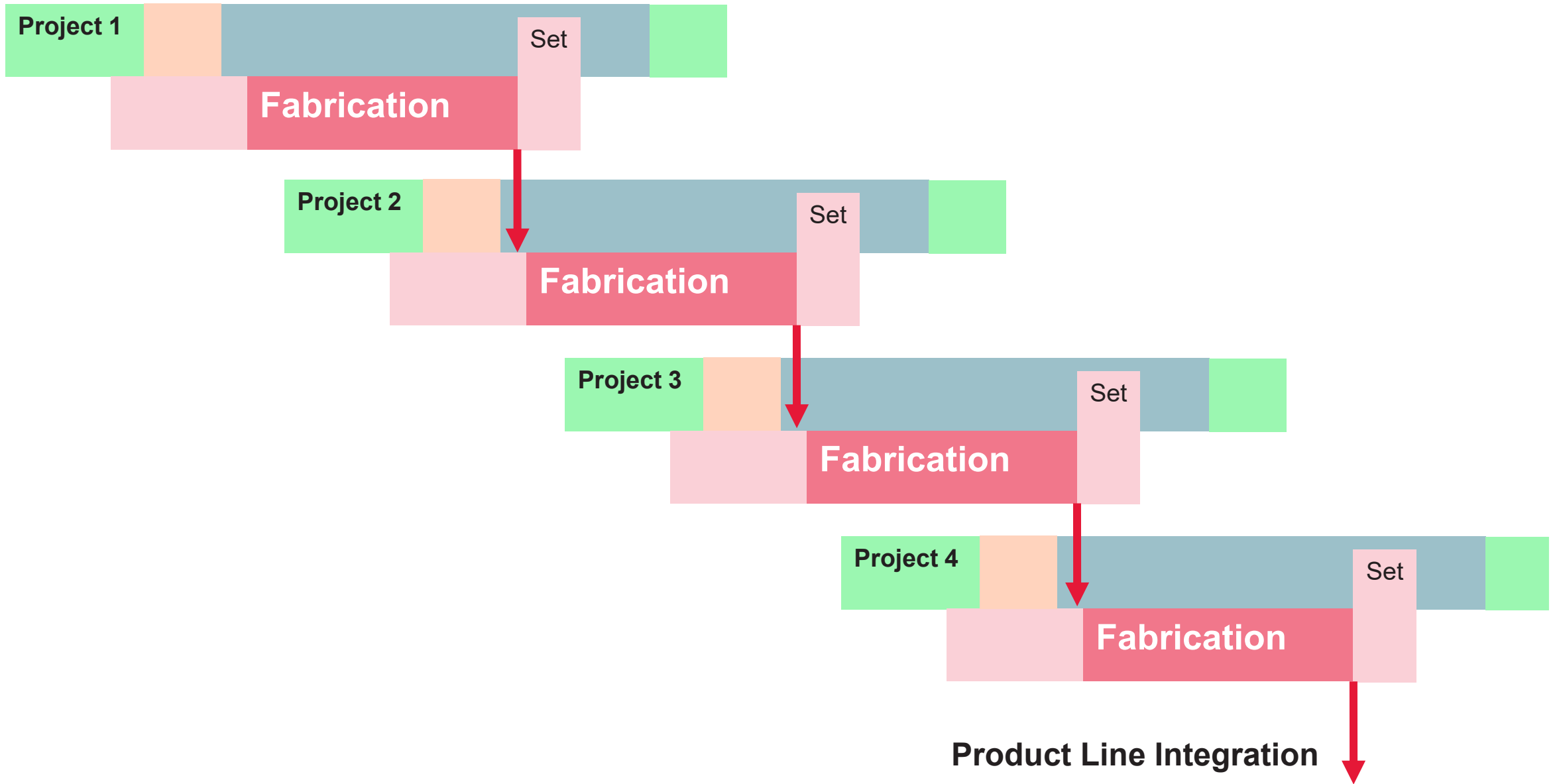
St. Clair College Student Housing



St. Clair College Student Housing



**Traditional vs Modular Schedule**

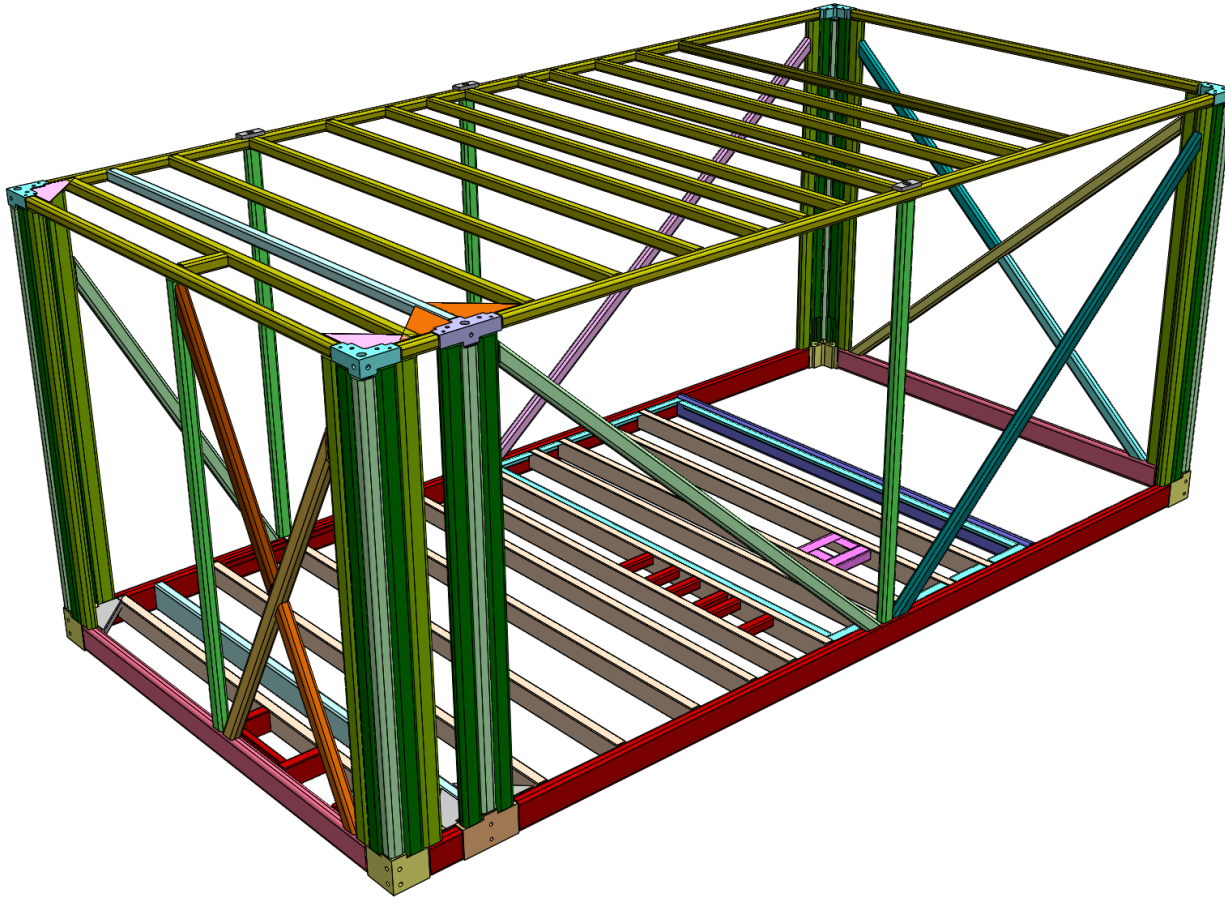




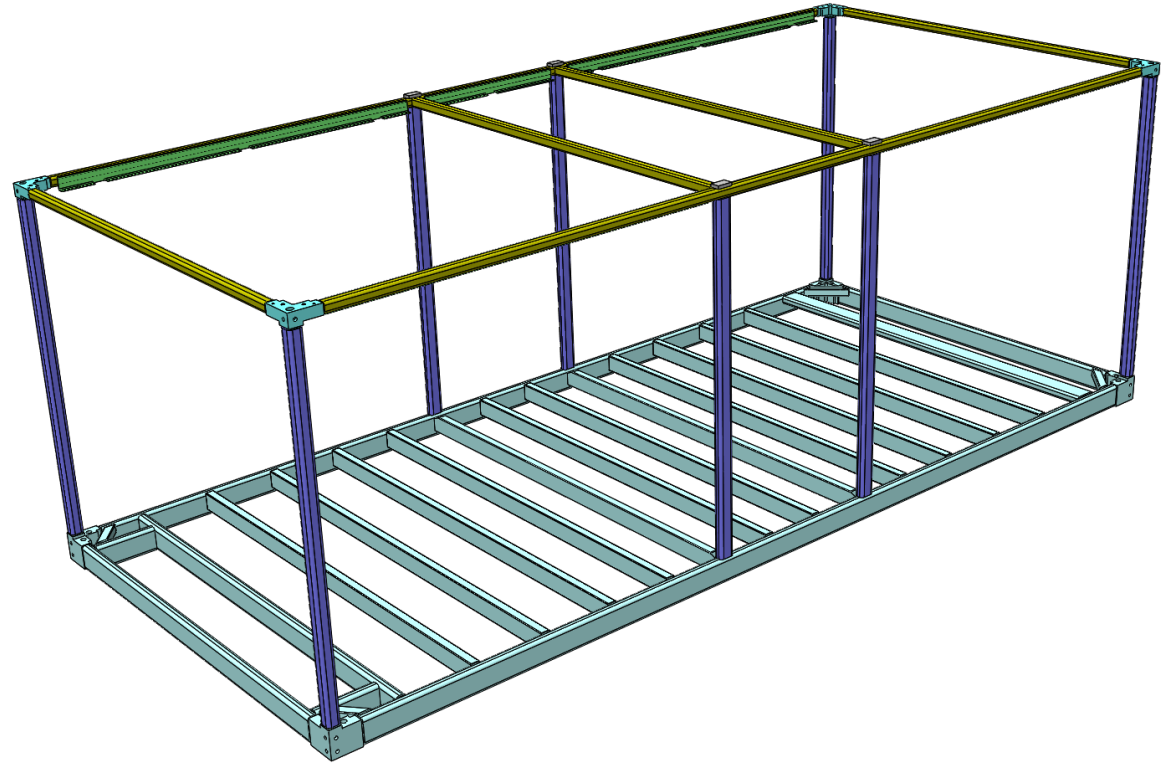
# FUZE™

*Scalable Product Line*





LTC  
Chassis  
(130 parts)



Fuze  
Chassis  
(56 parts)



# FUZE

Z Modular Scalable Product Line

- Open Live Mod
- Sleeping Mod
- Living/1B Mod
- Kitchen/2B Mod



MICRO - 1 mod = 35sf

SENIOR LIVING - 2 mod = 70sf

THREE BEDROOM - 1 1/2 mod = 87sf

Micro

Three Bed End

Senior

Three Bed w Master



ONE BEDROOM - 1 1/2 mod = 82sf

TWO BEDROOM - 2 mod = 70sf

THREE BEDROOM - 1 1/2 mod = 93sf

THREE BEDROOM - 1 1/2 mod = 87sf

One (1-1/2) Bed

Two Bed

Two+Den (2-1/2)

Three Bed + Study



**Lucan Ontario, Affordable Housing  
Z Modular**



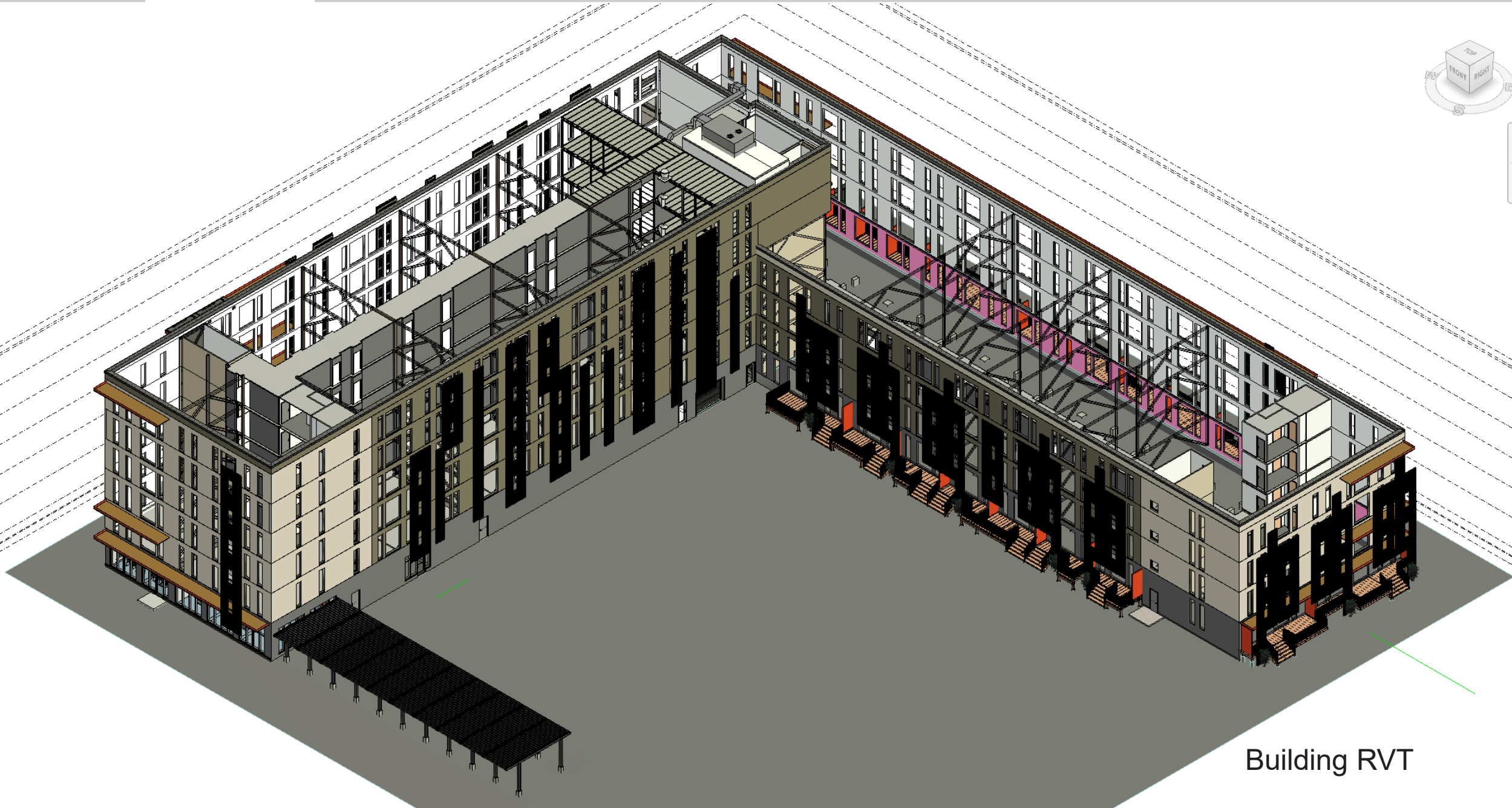


Woodstock Ontario



Port Elgin Ontario

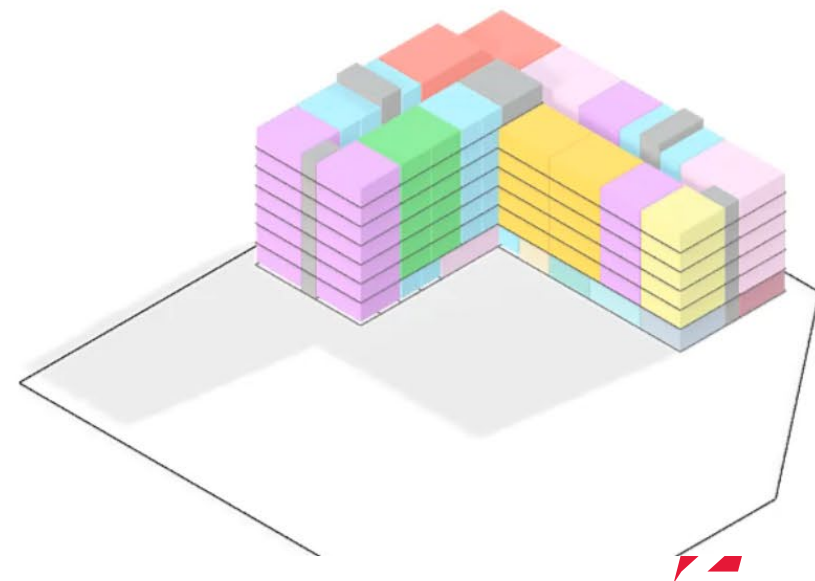
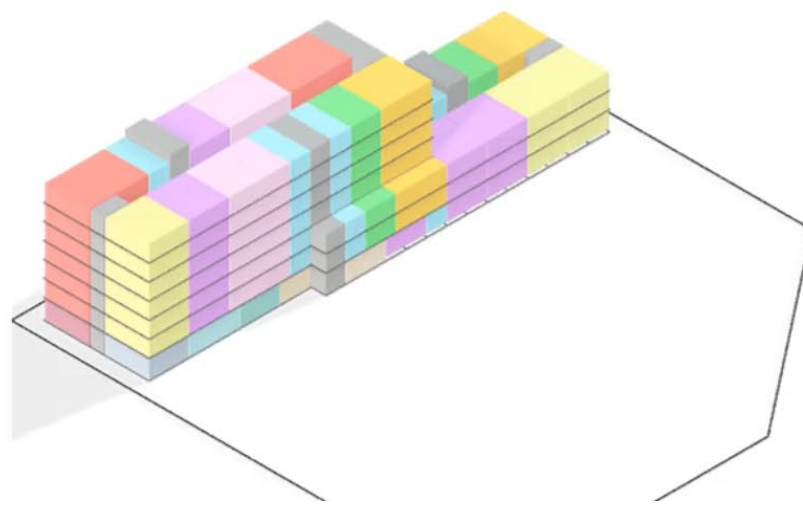
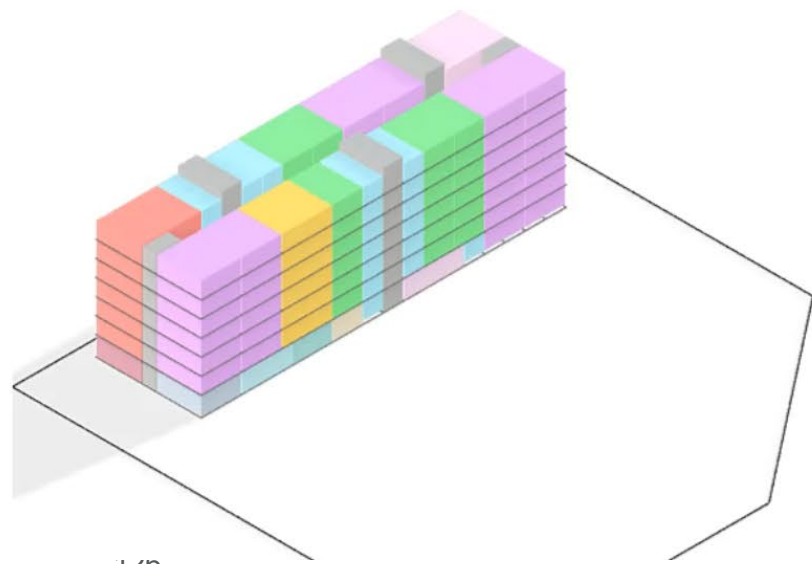


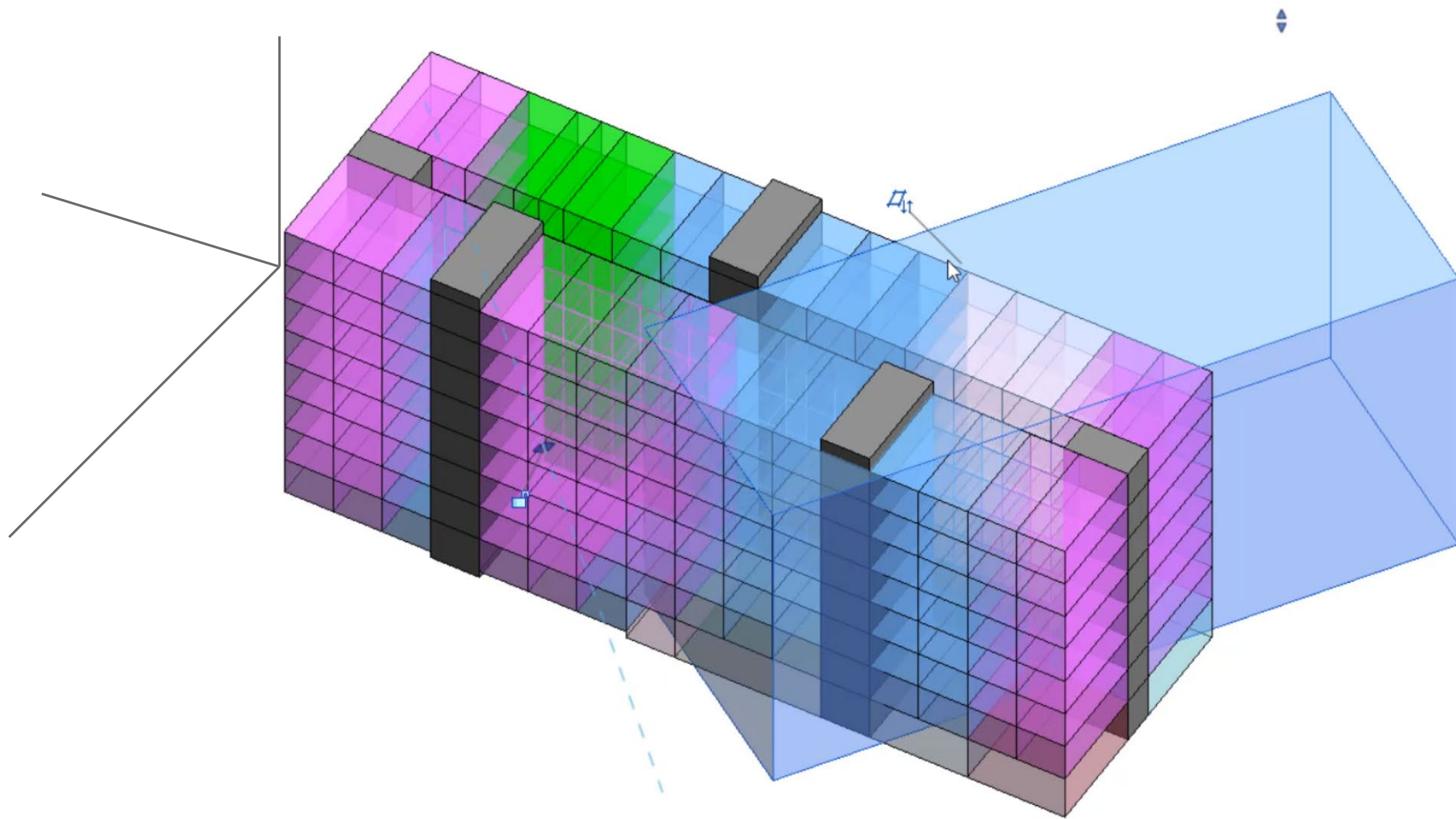


Building RVT



# Z Modular Fuze Generator





Enhance generated options

# Questions:

- |                     |                                                         |
|---------------------|---------------------------------------------------------|
| 1. Barrier to Entry | Incentives to increase modular factories?               |
| 2. Labor question   | Training incentives?                                    |
| 3. Fungible product | Change to code allowing mods built before a code change |
| 4. Development      | Public land for modular demonstration projects.         |



# Middlesex-London Food Policy Council

Michelle Smibert

Ellen Lakusiak

Janan Dean

Diane McComb

Hadleigh McAlister

# Who We Are And What We Do

Middlesex London Food Policy Council

 @MiddlesexLondonFPC

 @middlesexlondonfpc

 @mlfpc

 mlfpc.ca



**Middlesex London**  
Food Policy Council

# OUR BOARD MEMBERS



**Janan Dean**  
Chair, Research



**Jose Medina**  
Vice Chair, Food Processing



**Thomas Sumpter**  
Treasurer, Economic  
Development



**Demetri Makrakos**  
Middlesex County Staff



**Michelle Smibert**  
Middlesex County,  
Councillor



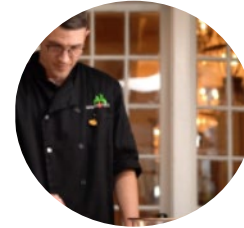
**Katherine Hogendorn**  
Food Distribution



**Matt Rice**  
Food Service



**Maya Clarke**  
Food Access



**Andrew Fleet**  
Education



**Susan Smith**  
Education



**Prab Kaur**  
Food Entrepreneur



**Diane McComb**  
Agriculture Association



**Megan Papadakos**  
Urban Community Member



**Keisha Joseph**  
Urban Community Member



**Sarah Finch**  
Rural Community Member

Urban Agriculture  
Labor Alliance

City of London Staff  
Vanessa Kinsey

City of London Councillor  
Haley McAlister



**Middlesex London**  
Food Policy Council

# OUR NON-VOTING MEMBERS



Jane Roy  
Coordinator



Jessica Cordes  
Past Chair



Ellen Lakusiak  
Coordinator

# OUR VOLUNTEERS



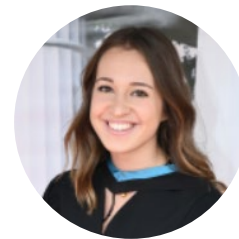
Amy Bumbacco  
Volunteer, Webmaster



Jean Carson  
Volunteer, Governance



Maha Waseem  
Volunteer



Melanie Aguiar  
Volunteer



Vicky Anborgh  
Volunteer

Lauren Palmer  
Volunteer

Benjamin Hill  
Volunteer



# What We Do

Vision: A local food system that is...







# What Do We Do?



# Discuss Local Food Issues

Field to fork conversations; sustainable agriculture, land use planning, food distribution and access, food literacy, food justice, food waste



## Community Food Security

**01.**

Goal of achieving a healthy, just, and sustainable food system

**02.**

Comprehensive view of food systems and food environments and their connections to people, resources and places

**03.**

Communities are crucial for developing solutions and creating positive change



# Food Sectors

## Food System Players

### Examples....

Ontario Federation of  
Agriculture

London Food Bank,  
Middlesex County  
Food Banks

Western Fair  
District

London  
Environmental  
Network

Western/Fanshawe

Community Supported  
Agriculture (CSA's)

Growing Chefs

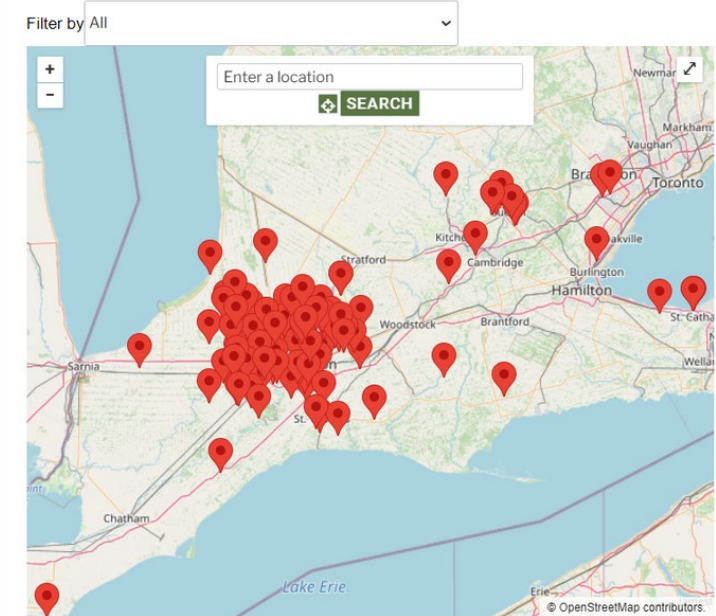


# Support Programs and Services

Examples...	Middlesex County Libraries	Food Cupboard
Thorndale, Dorchester in Thames Centre	City of London	Farm Commodity Groups
Food Programming: Cooking with Local Food	Contribute food to community organization	Ontario School Nutrition Program
Community Gardens	Local Food Directory	Middlesex County Libraries



[mlfpc.ca/localfooddirectory](http://mlfpc.ca/localfooddirectory)



**Middlesex London**  
Food Policy Council

# Empower Citizens

Food Champions

Community Gardens

Farmers Markets and Farm Gate Sales

Seed Libraries

Food Literacy Programming; Cooking with local food

Events, Forums



**Middlesex London**  
Food Policy Council

# Phases of MLFPC's LCRN Research

**PHASE 1**



**COMMUNITY FOOD  
ASSESSMENT (CFA)**

Middlesex London

(January 2022)

**PHASE 2**



**COMMUNITY  
EVENTS**

Know Your Food: Grow,  
Eat, Understand

(November 2022)

**PHASE 3**



**ENVIRONMENTAL  
SCAN**

Exploring Municipal Food  
System Policies & Practices

(April 2023)

**PHASE 4**



**AGRI-FOOD NETWORKS**

Identifying Potential for  
Regional Collaboration

(June 2023)

Additional Critical Analysis, summary & recommendations completed September 2023



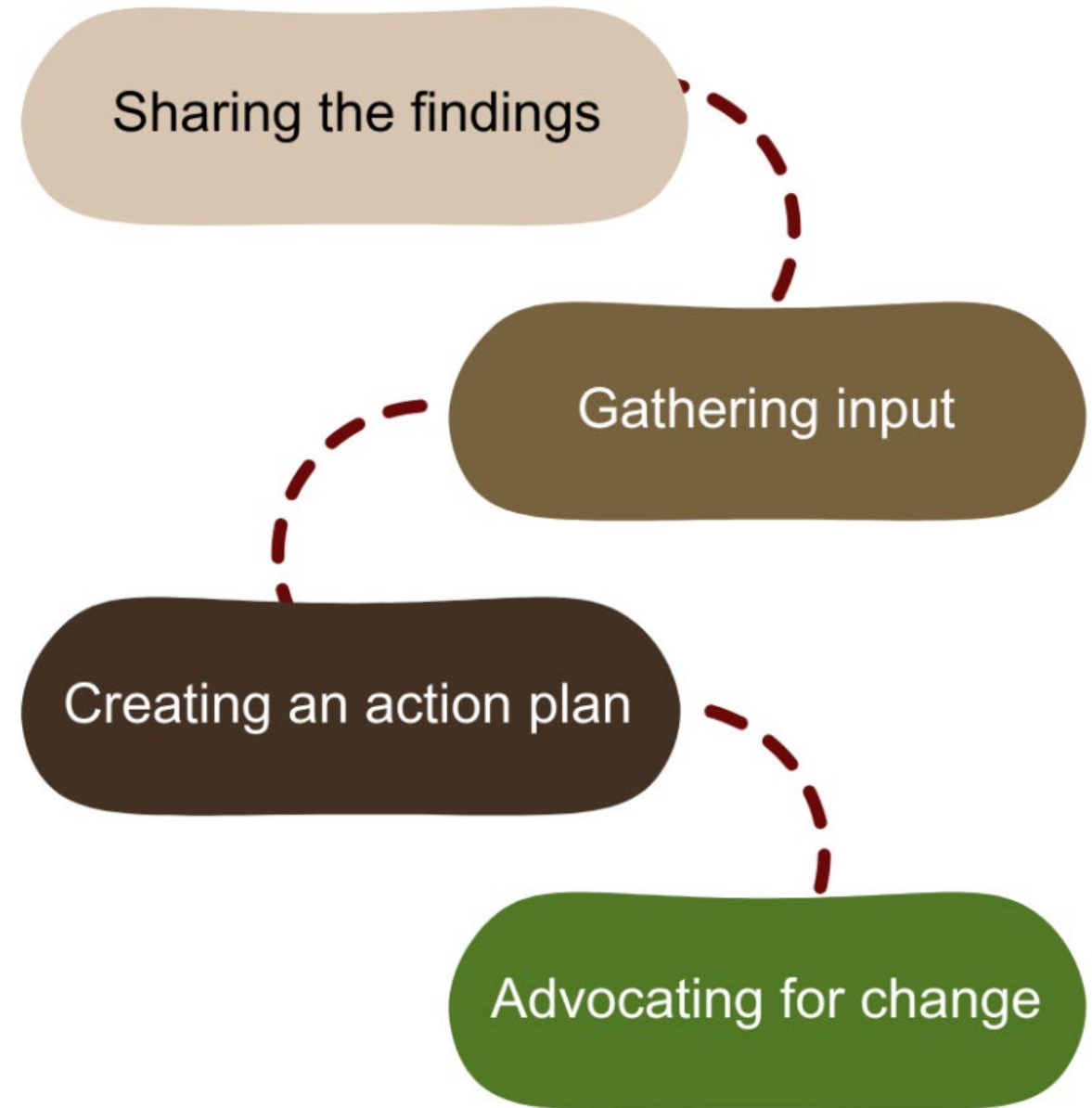
---

❖

# Next Steps

---

❖



# Influence

Political Advocacy and Speaking up for our local food system

Community  
Gardens



County and City  
Round Table  
Conversations



National School Food  
Program



Land Use/ Loss of  
Farmland





# Sustainable Funding



Commitment from London Food Bank

Commitment of funds for next 3 years...

- Will allow us to hire some staff
- Secures our ability to carry out research recommendations
- Pursue work in follow up to research recommendations



# What We Want To Do

## In the coming year:

### Priority Action Groups

Policy and Advocacy – On rural and urban food issues of relevance.

Knowledge Mobilization – Sharing evidence based information, in the right way.

Council Capacity -building – Strengthening our role as the trusted voice; building relationships.



**Middlesex London**  
Food Policy Council

# Thank you very much!

 @MiddlesexLondonFPC

 @middlesexlondonfpc

 @mlfpc

 mlfpc.ca



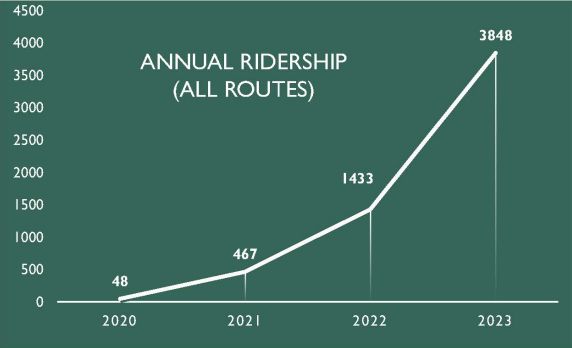
**Middlesex London**  
Food Policy Council

# State of the Union

Warden Aina DeViet



# OUR NUMBERS



**169%**

RIDERSHIP INCREASE IN 2023

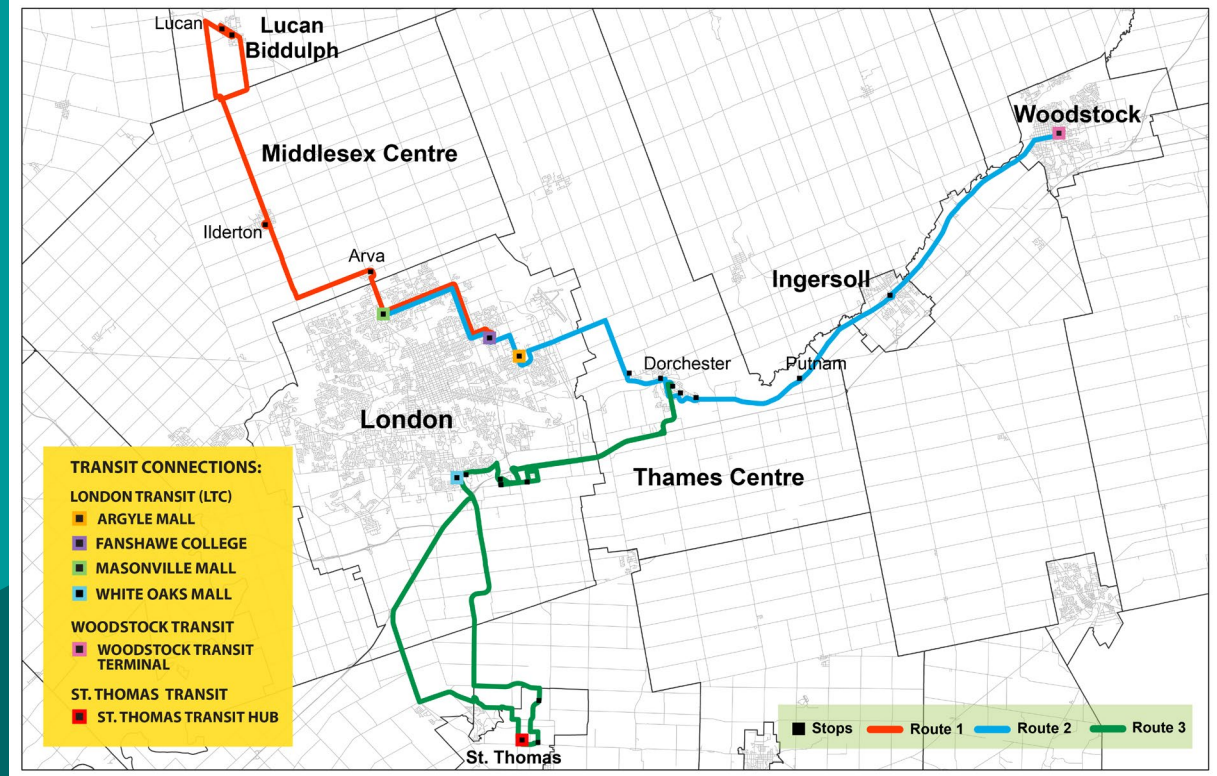
**40%**

MONTHLY BOARDINGS TO FANSHAWE COLLEGE ON ROUTE 2

**23%**

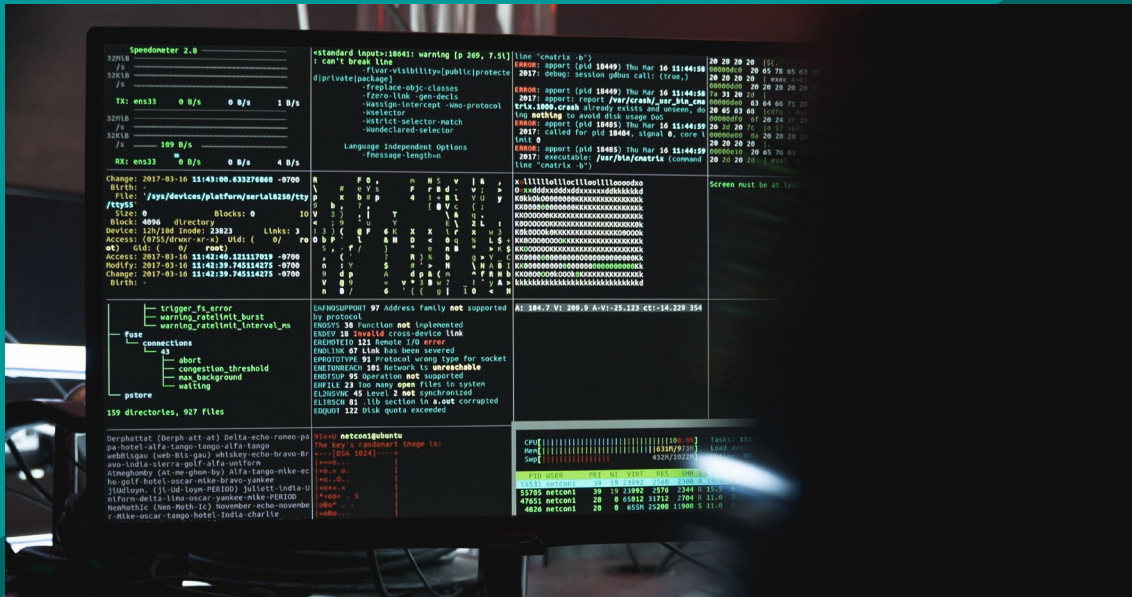
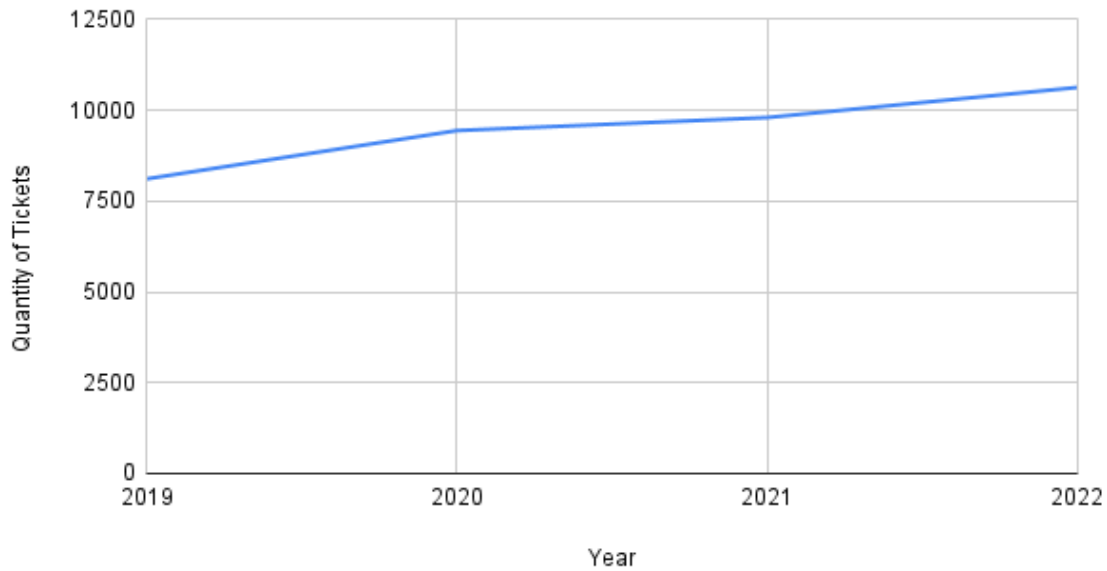
MONTHLY BOARDINGS TO FANSHAWE COLLEGE ON ROUTE 1

Note: The service launched during the COVID-19 Pandemic, rendering ridership data before 2023 heavily influenced by pandemic circumstances and not indicative of the service's true potential demand



**\$5 ONE WAY**

# Information Technology Yearly Tickets



Planning Applications	Actuals							Projected			Average	
	2016	2017	2018	2019	2020	2021	2022	2023	2024	2025	2026	-
<b>Year</b>												
<b>Local Applications</b>	346	386	327	407	393	433	375	362	387	394	401	381
<b>Approval Authority Open</b>	43	47	46	53	52	54	62	61	52	53	54	51
<b>Approval Authority Active</b>	21	36	42	48	47	54	56	54	44	45	46	43









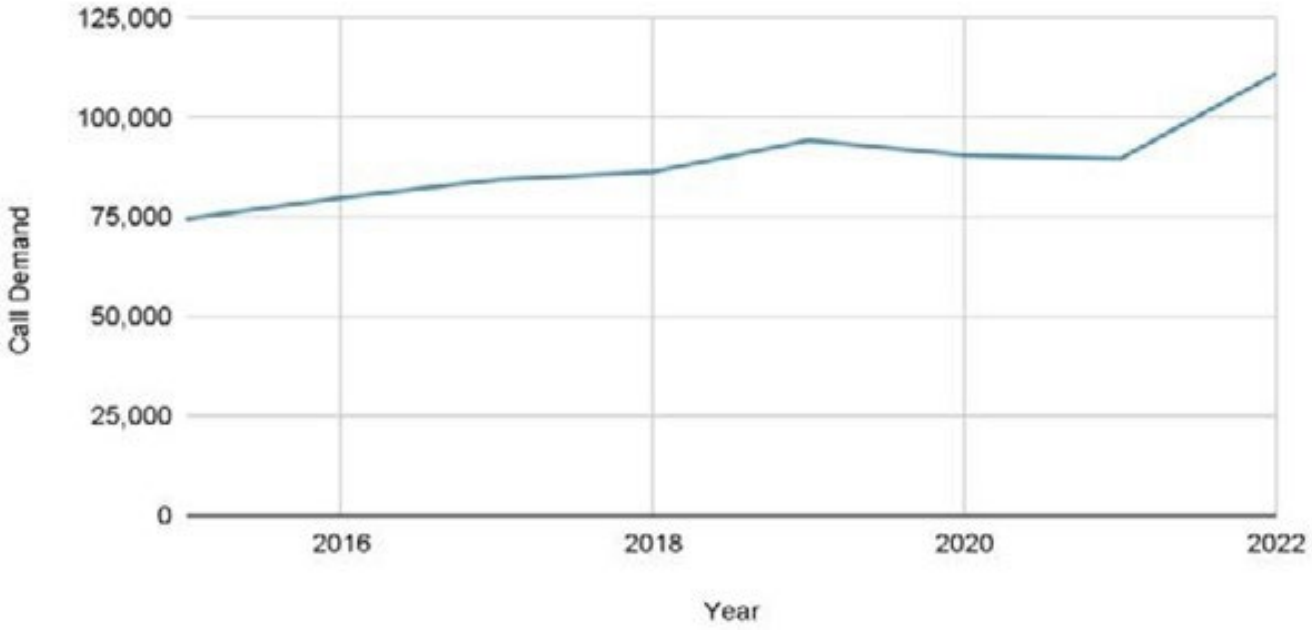


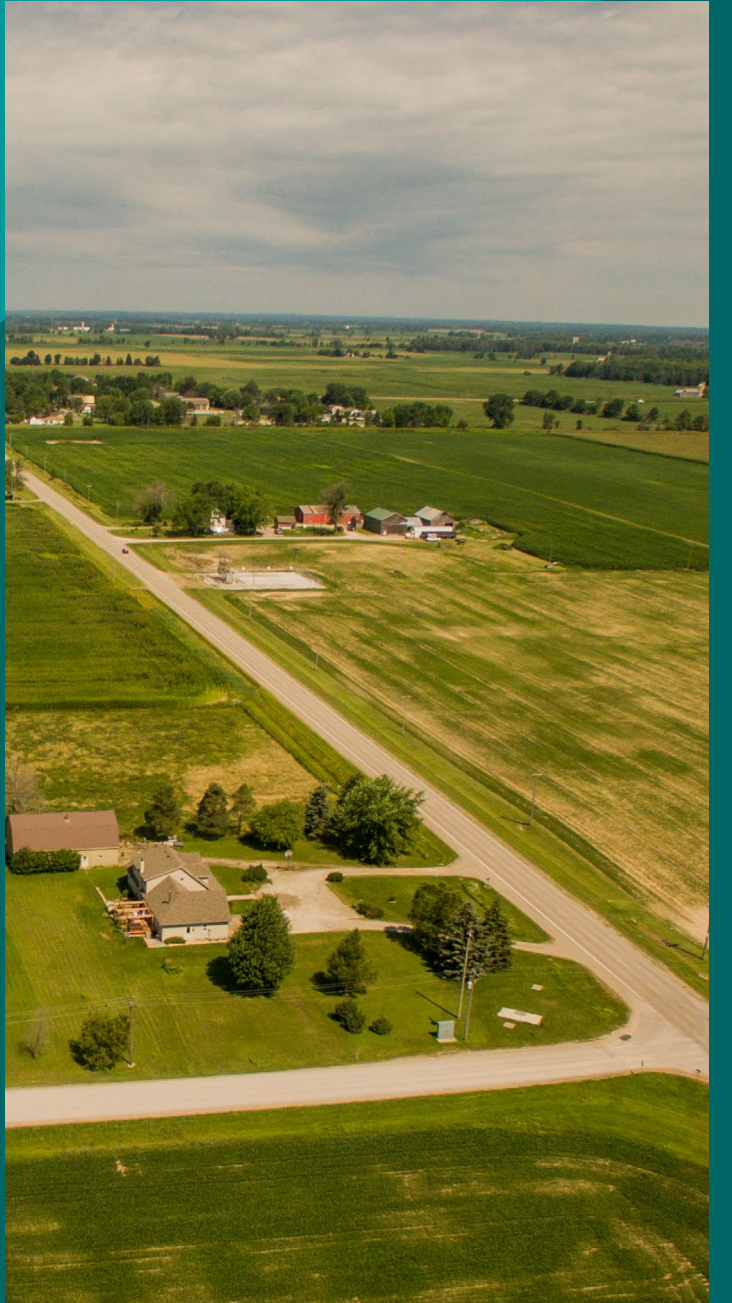
**948 EarlyON in-person programs**  
**54 virtual programs**  
**20,313 children and caregiver visits**



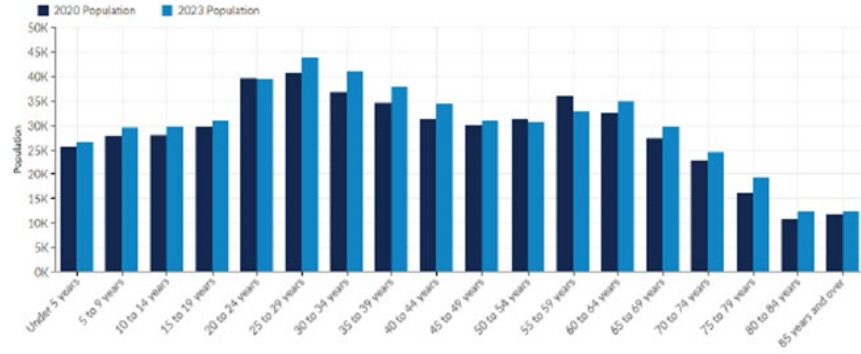


# MLPS Total Call Demand





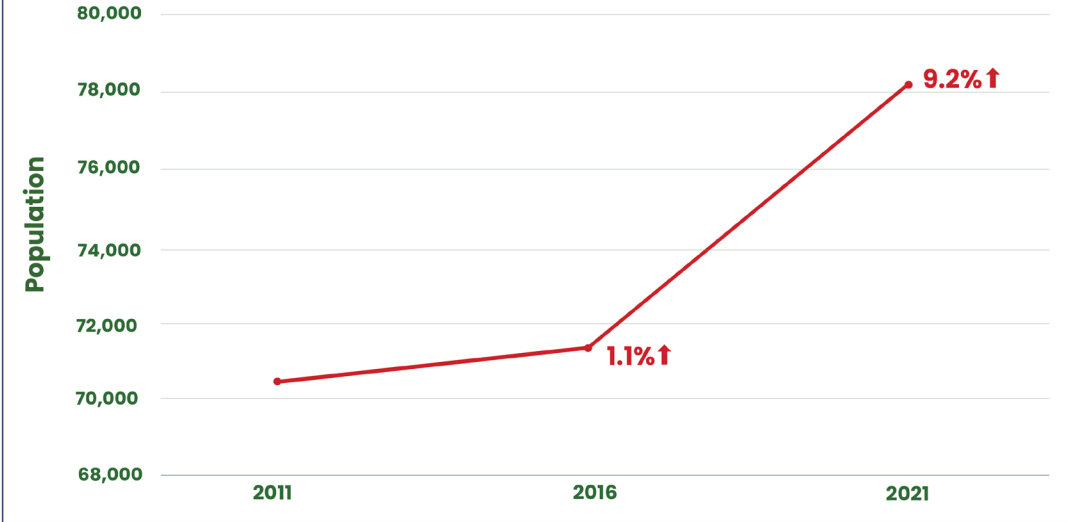
### Population by Age Cohort



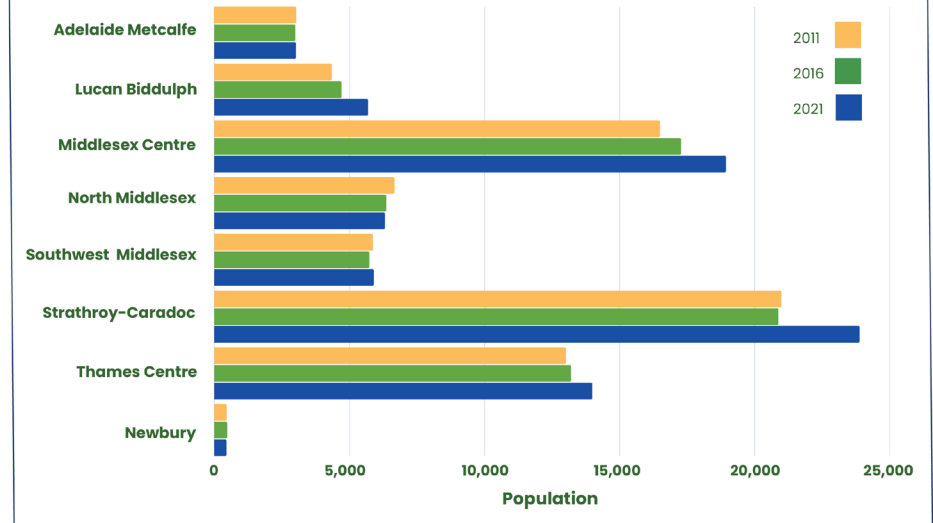
Age Cohort	2020 Population	2023 Population	Change	% Change	2023 % of Cohort
Under 5 years	25,530	26,467	937	4%	4.92%
5 to 9 years	27,703	29,360	1,657	6%	5.45%
10 to 14 years	27,935	29,582	1,647	6%	5.49%
15 to 19 years	29,476	30,844	1,368	5%	5.73%
20 to 24 years	39,337	39,260	-77	0%	7.29%
25 to 29 years	40,593	43,747	3,154	8%	8.12%
30 to 34 years	36,569	40,828	4,259	12%	7.58%
35 to 39 years	34,346	37,753	3,407	10%	7.01%
40 to 44 years	31,030	34,176	3,146	10%	6.35%
45 to 49 years	29,885	30,917	1,032	3%	5.74%
50 to 54 years	31,109	30,462	-647	-2%	5.66%
55 to 59 years	35,839	32,805	-3,034	-8%	6.09%
60 to 64 years	32,330	34,746	2,416	7%	6.45%
65 to 69 years	27,204	29,628	2,424	9%	5.50%
70 to 74 years	22,747	24,400	1,653	7%	4.53%
75 to 79 years	15,959	19,066	3,107	19%	3.54%
80 to 84 years	10,739	12,191	1,452	14%	2.26%
85 years and over	11,778	12,226	448	4%	2.27%
<b>Total</b>	<b>510,109</b>	<b>538,458</b>	<b>28,349</b>	<b>6%</b>	<b>100.00%</b>



### POPULATION FROM 2011 TO 2021



### POPULATION FROM 2011 TO 2021 BY MUNICIPALITY



# Budget Highlights

## Middlesex County Budget 2024



The 2024 Budget reflects the County's commitment to making appropriate investments in the core services that our residents rely on, while also considering the reality that our taxpayers are facing increased costs of living from provincial and federal policy decisions.

A tax rate increase of 2.93% means that for the value of a residential property, taxes would increase by \$12.62 per \$100,000 of the value of the property according to its MPAC assessment.

### Social Services

- Investments in childcare and EarlyON programs and services that supports more child and family visits
- Collaboration with the City of London to update the Homeless Prevention and Housing Plan as required by the Province



### Middlesex-London Paramedic Service (MLPS)

- Maintenance of current service levels with a plan to extend service hours with the addition of 2, 12 hours of service
- Investment in risk mitigation and protection, considering call growth and off-load delays



### Strathmere Lodge

- Staffing and technological enhancements to support resident care quality
- Investment in Strathmere Lodge facility



### Planning and Woodlots

- Addition of one planning staff to support County strategic outcomes as it pertains to increased growth and development



### Middlesex County Library

- Strategic investments in programs and services that enhance and expand access to technology



### Economic Development

- A new Middlesex County Tourism Tool to support regional economic development initiatives



### Middlesex County Connect

- Additional funding secured from the province for enhancements to Middlesex County Connect



### Administration

- Adjustment to non-tax revenues through increased interest income and third-party recoveries
- Modernization of corporate processes and workflows



### Transportation Infrastructure Program

- |                             |                         |                                |
|-----------------------------|-------------------------|--------------------------------|
| <b>Bridge Replacements:</b> | <b>Traffic Signals:</b> | <b>Roundabout:</b>             |
| • Waubuno Bridge            | • Dundas @ Nissouri     | • Glendon @ Vanneck Roundabout |
| • Nairn Bridge              | • Denfield @ Elginfield |                                |
|                             | • Longwoods @ Carriage  |                                |
|                             | • Glendon @ Melbourne   |                                |

### 2024 County Road Paving Program

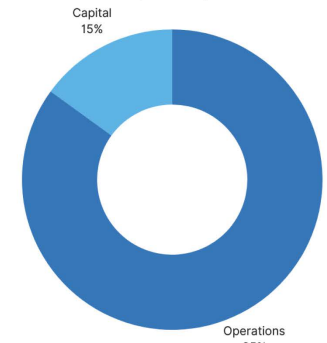
Ilderton Road	Cold Stream Road to Ilderton	12,400 m
Denfield Road	Highway 4 to Denfield	8,100 m
Saintsbury Line	County Road 47 to Market Street	1,500 m
Elgin Road	County Road 2 to Catherine Street	5,800 m
Elgin Road	County Road 29 to Elgin County	8,300 m
Adelaide Road	County Road 2 to Parkhouse Drive	4,700 m



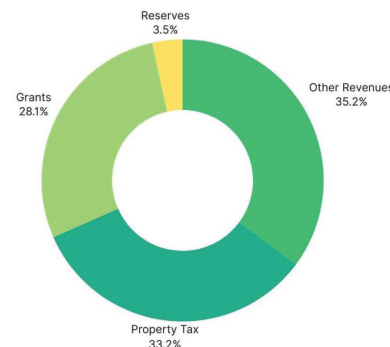
### Expense Allocation



### Operating vs. Capital Expense



### Revenue Source



Middlesex County is in a very positive financial situation, specifically as it pertains to tax rates, reserves and use of debt. This is a credit to Middlesex County Council's strategic partnerships and approach and commitment to legislated and people-oriented services.

In comparison, Middlesex County maintains one of the lowest upper-tier tax rates in Southwestern Ontario.

The 2024 Budget does not utilize funds from the Tax Rate Stabilization Reserve.



**Strategic Plan Guiding Principles:**



Balancing the rural-urban qualities of the County



Building relationships and working in a collaborative and supportive way



Leading through innovation, evaluation, and continuous improvement



Recognizing the uniqueness of our local municipal partners



Maintaining financial sustainability



Focusing on diversity and inclusion



Being flexible and responsive



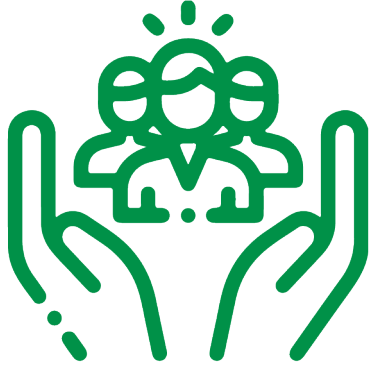




Ad



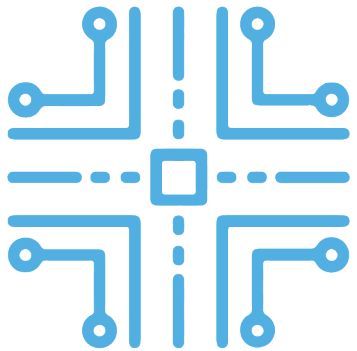
# Strategic Focus



**Cultivating  
Community Vitality**



**Strengthening Our  
Economy**



**Connecting Through  
Infrastructure**



**Promoting Service  
Excellence**





**Thank You!**

**Middlesex Municipal  
Association**

75<sup>th</sup> Annual Meeting